

## GENERAL INSTRUCTION FOR EARTHING:

1. Location of earthing conductors / risers shown in the earthing drawing may change to suit the site condition.
2. Two different risers of one structure/equipment shall be connected to different conductors of main earthmat.
3. Earthing conductor around the building shall be buried at a minimum distance of 1500 mm from the outer boundary of the building.
4. Minimum distance of 6000 mm shall be maintained between two treated (pipe) electrode.
5. For surge arrester, earthing lead from surge counter to main earthmat shall be shortest in length as practically as possible. Earthing lead from surge arrester shall not be passed through any pipe.
6. No welding is allowed in the over ground earthing leads/risers if the length is less than 6m .
7. All ground connections shall be made by electric arc welding. All welded joints shall be allowed to cool down gradually to atmospheric temperature before putting any load on it. Artificial cooling shall not be allowed.
8. All arc welding with MS ROD shall be done with low hydrogen content electrodes. the welds should be treated with red oxide primer and afterwards coated with two layers bitumen compound to prevent corrosion.
9. Wherever earthing conductor crosses cable trenches, underground service ducts, pipes, tunnels, railway tracks etc., it shall be laid minimum 300 mm below them and shall be circumvented in case it fouls with equipment/structure foundations.
10. Earthing conductor around the building shall be buried in earth at a minimum distance of 1500 mm from the outer boundary of the building.
11. Earthing conductors crossing the road shall be laid 300mm below road or at greater depth to suit the site conditions.
12. Earthing conductors embedded in the concrete shall have approximately 50mm concrete cover

RELEASED FOR CONTRUCTION

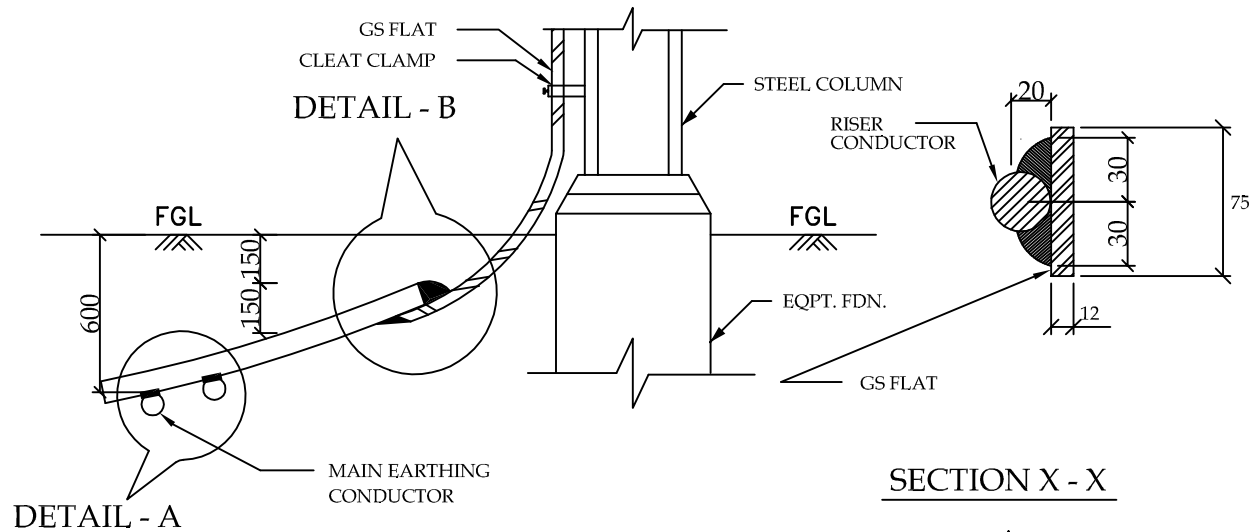
POWER GRID CORPORATION  
OF INDIA LIMITED  
( A Government of India Enterprise )



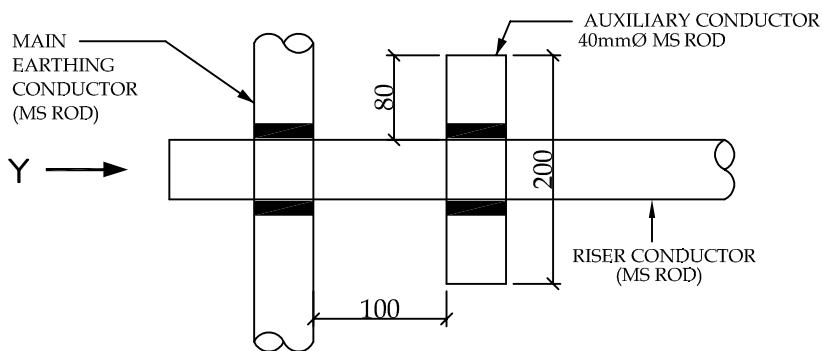
PROJECT :- TECHNICAL SPECIFICATION-  
SWITCHYARD ERECTION

TITLE:- STANDARD EARTHING DETAILS

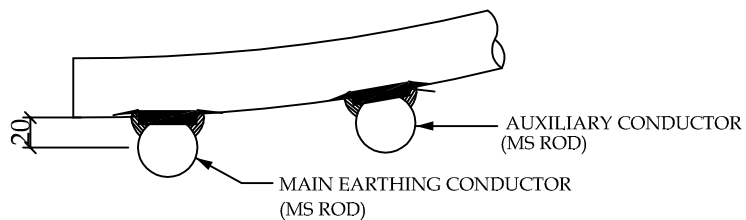
<i>KKPurkay</i>	<i>KKPurkay</i>	Dec-2013	Drawing No.:
CKD BY	PRPD BY	Date	C/ENG/STD/EARTHINGS/09 SHEET # 1



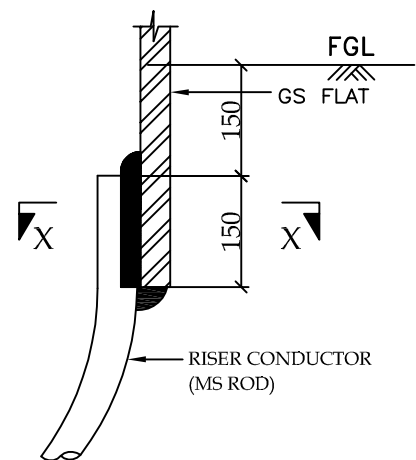
TYPICAL DETAILS OF RISER



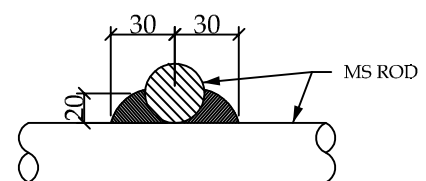
PLAN



ELEVATION  
DETAIL - A



ELEVATION  
DETAIL - B



VIEW - Y

RELEASED FOR CONTRUCTION

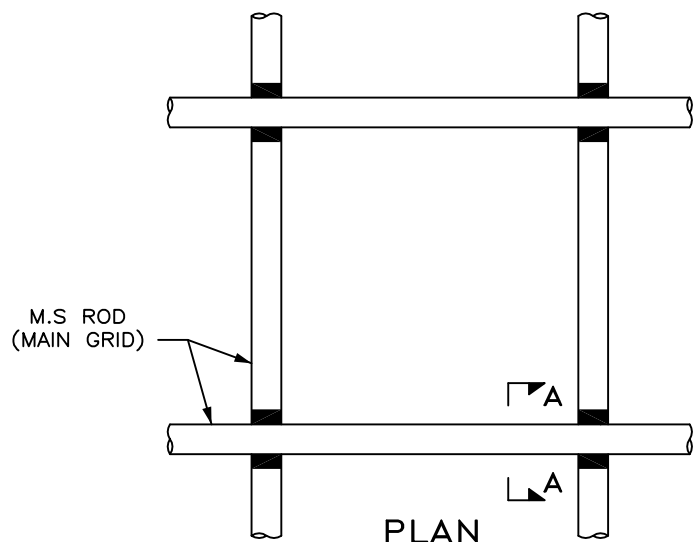
POWER GRID CORPORATION  
OF INDIA LIMITED  
( A Government of India Enterprise )



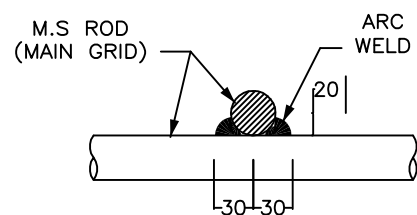
PROJECT :- TECHNICAL SPECIFICATION-  
SWITCHYARD ERECTION

TITLE:- STANDARD EARTHING DETAILS

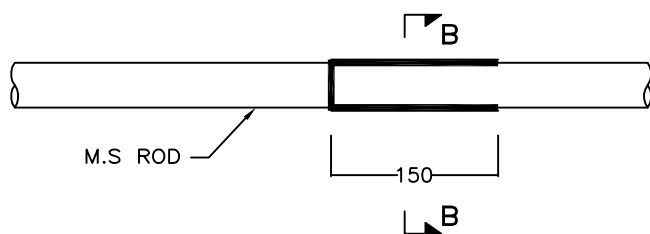
<i>KK Parhar</i>	<i>KK Parhar</i>	Dec-2013	Drawing No.:
CKD BY	PRPD BY	Date	C/ENG/STD/EARTHINGS/09 SHEET # 2



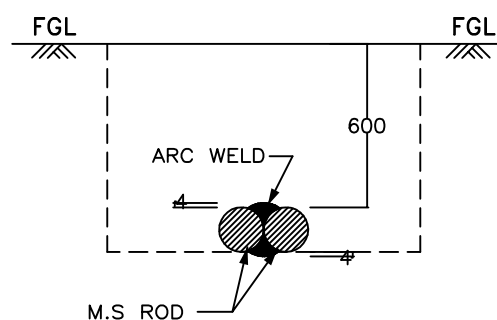
PLAN  
DETAIL OF CROSS JOINT



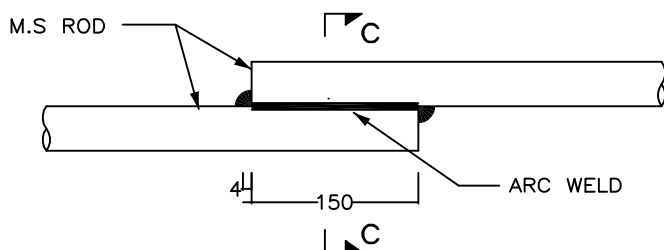
SECTION A - A



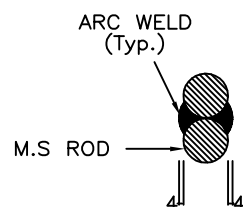
ELEVATION  
(CONDUCTORS KEPT ON SIDES)



SECTION B - B



ELEVATION  
(CONDUCTORS ONE ABOVE THE OTHER)



SECTION C - C

DETAIL OF LAP JOINT

RELEASED FOR CONTRUCTION

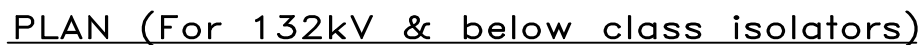
POWER GRID CORPORATION  
OF INDIA LIMITED  
( A Government of India Enterprise )



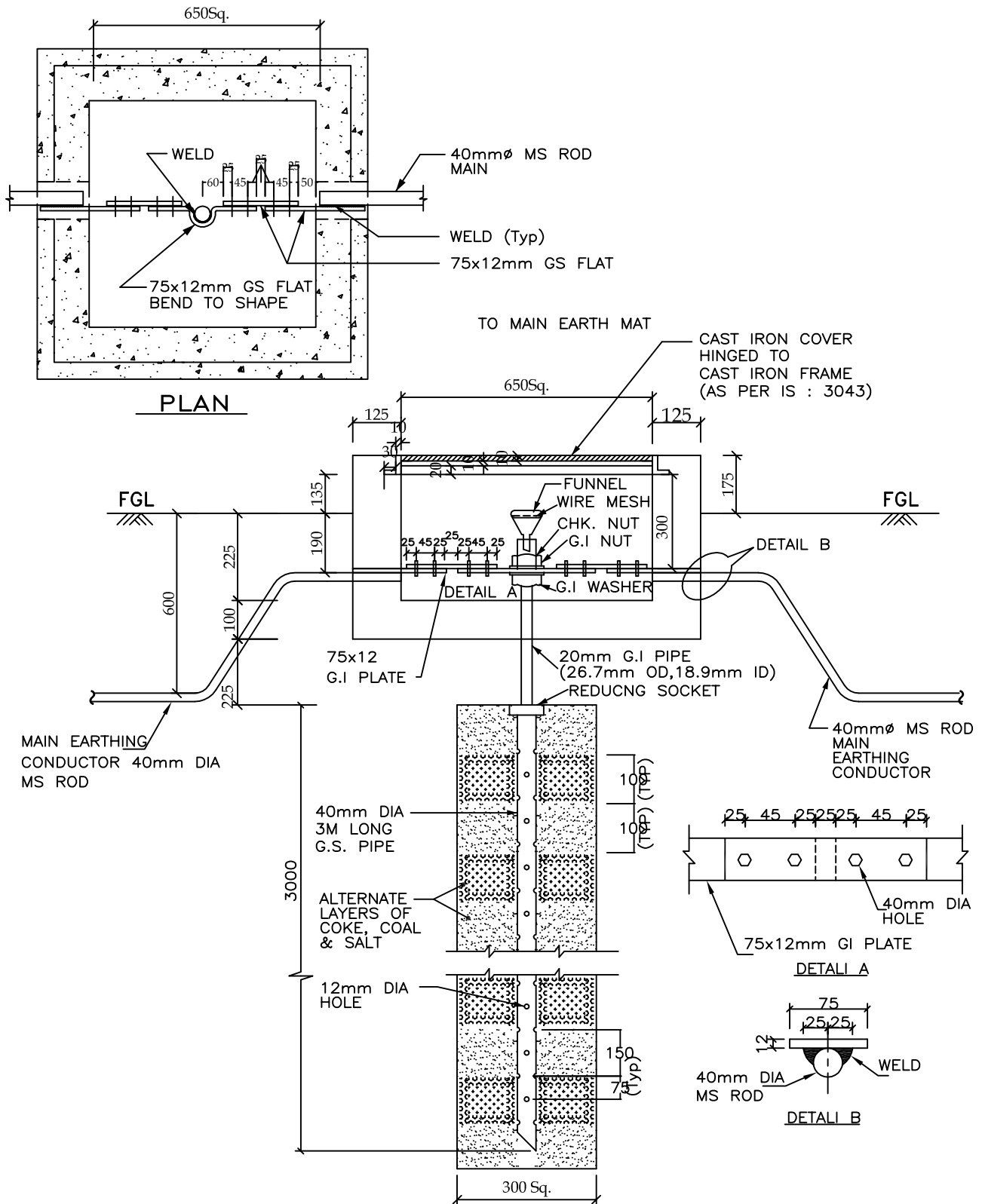
PROJECT :- TECHNICAL SPECIFICATION-  
SWITCHYARD ERECTION

TITLE:- STANDARD EARTHING DETAILS

<i>KK Parhar</i>	<i>KK Parhar</i>	Dec-2013	Drawing No.:
CKD BY	PRPD BY	Date	C/ENG/STD/EARTHINGS/09
			SHEET # 3



<i>H.K.Parkar</i>	<i>H.K.Parkar</i>	Dec-2013	Drawing No.: C/ENG/STD/EARTHINGS/09 SHEET # 4
CKD BY	PRPD BY	Date	



RELEASED FOR CONTRUCTION

POWER GRID CORPORATION  
OF INDIA LIMITED  
( A Government of India Enterprise )

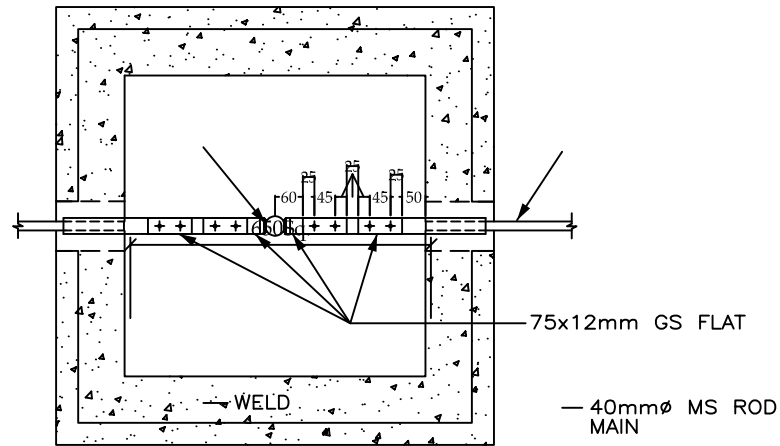


PROJECT :- TECHNICAL SPECIFICATION-  
SWITCHYARD ERECTION

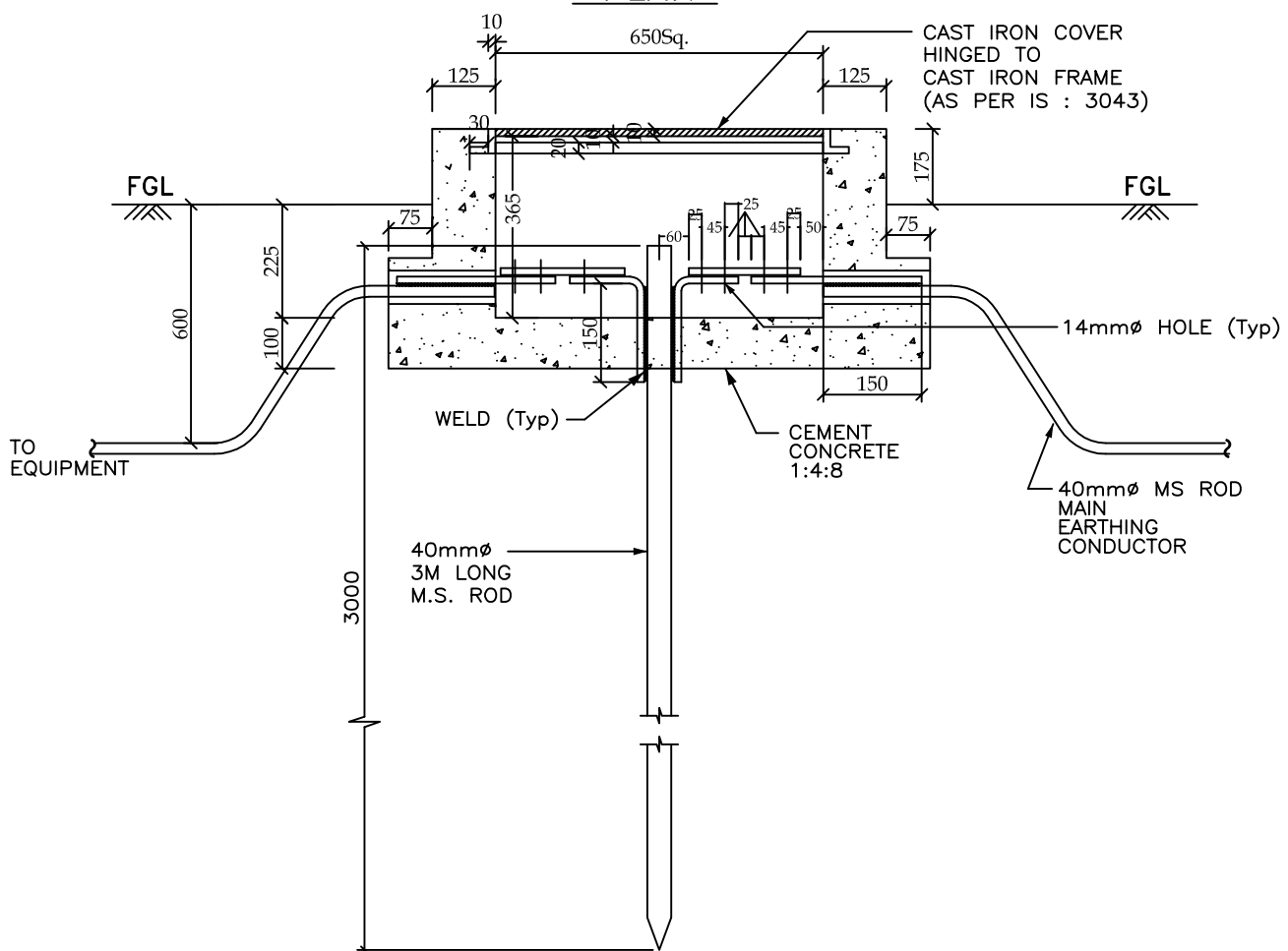
TITLE:- STANDARD EARTHING DETAILS

CKD BY	PRPD BY	Dec-2013	Drawing No.:
		Date	C/ENG/STD/EARTHINGS/09
			SHEET # 5

# ROD ELECTRODE WITH TEST LINK FOR LM, TOWER WITH PEAK, CVT, LA



**PLAN**



**ELEVATION**

RELEASED FOR CONTRUCTION

POWER GRID CORPORATION  
OF INDIA LIMITED  
( A Government of India Enterprise )

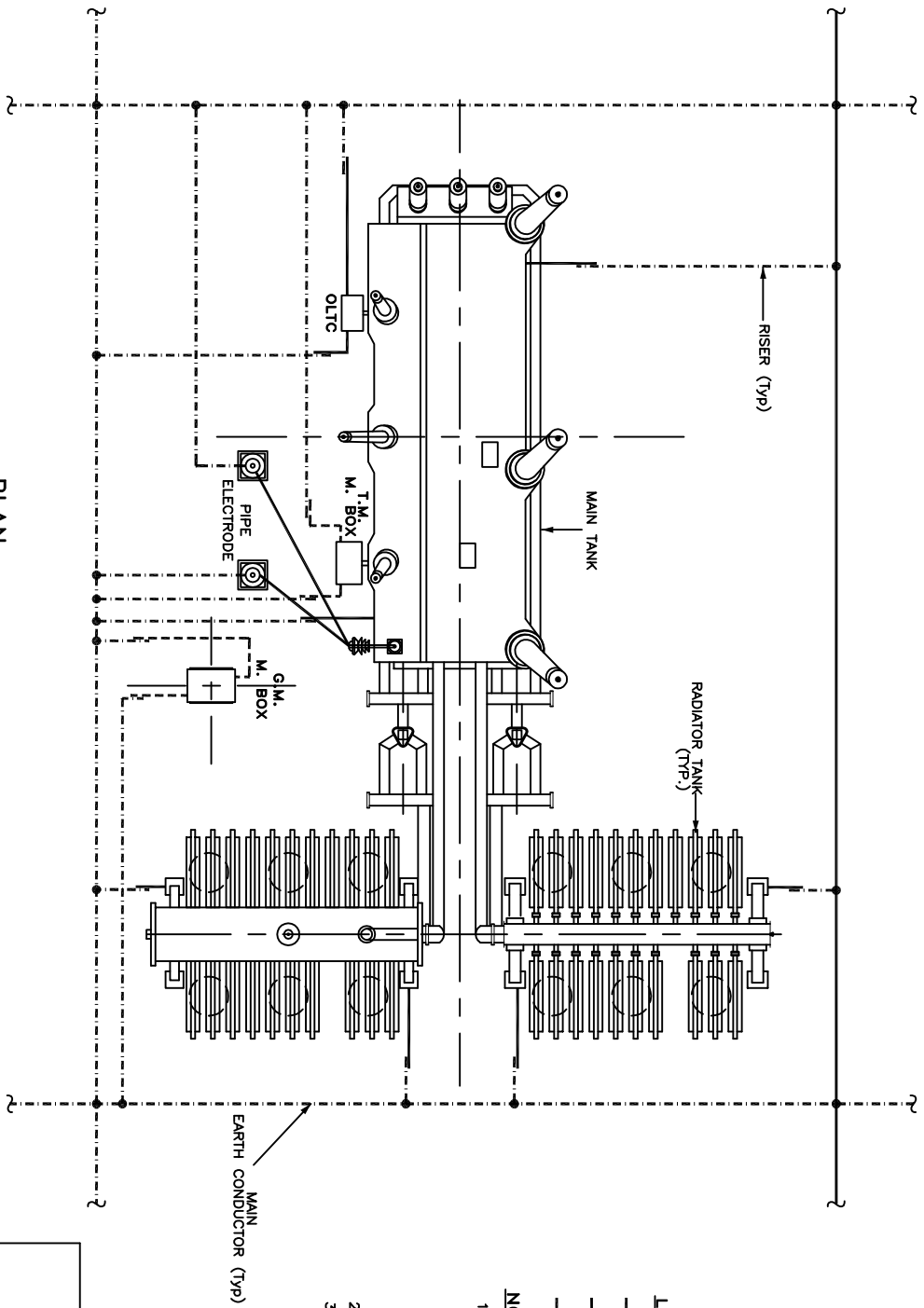


PROJECT :- TECHNICAL SPECIFICATION-  
SWITCHYARD ERECTION

TITLE:- STANDARD EARTHING DETAILS

CKD BY	PRPD BY	Date	Drawing No.: C/ENG/STD/EARTHINGS/09 SHEET # 6
HK Parhar	HK Parhar	Dec-2013	

# EARTHING OF TRANSFORMER/ REACTOR



MAIN  
EARTH CONDUCTOR (Typ)

### LEGEND

	40mm $\varnothing$ MS ROD
	75 x 12 mm GS FLAT
	50 x 6 mm GS FLAT

**NOTES :-**

- |                                                                                |                     |
|--------------------------------------------------------------------------------|---------------------|
| 1. NO. OF RISERS :-                                                            |                     |
| MAIN TANK                                                                      | - 2 Nos.            |
| RADIATOR TANK                                                                  | - 4 Nos. (ICT only) |
| OLTC                                                                           | - 2 Nos./M. BOX     |
| M. BOX                                                                         | - 2 Nos.            |
| NEUTRAL EARTH ELECTRODE                                                        | - 2 Nos.            |
| 2. NO. OF PIPE ELECTRODE REQUIRED = 2 Nos.                                     |                     |
| 3. PYTHON SUPPORTS SHALL BE EARTHED TO THE MAIN EARTHING CONDUCTOR BY GS FLAT. |                     |

RELEASED FOR CONSTRUCTION

**POWER GRID CORPORATION  
OF INDIA LIMITED**  
(A Government of India Enterprise)

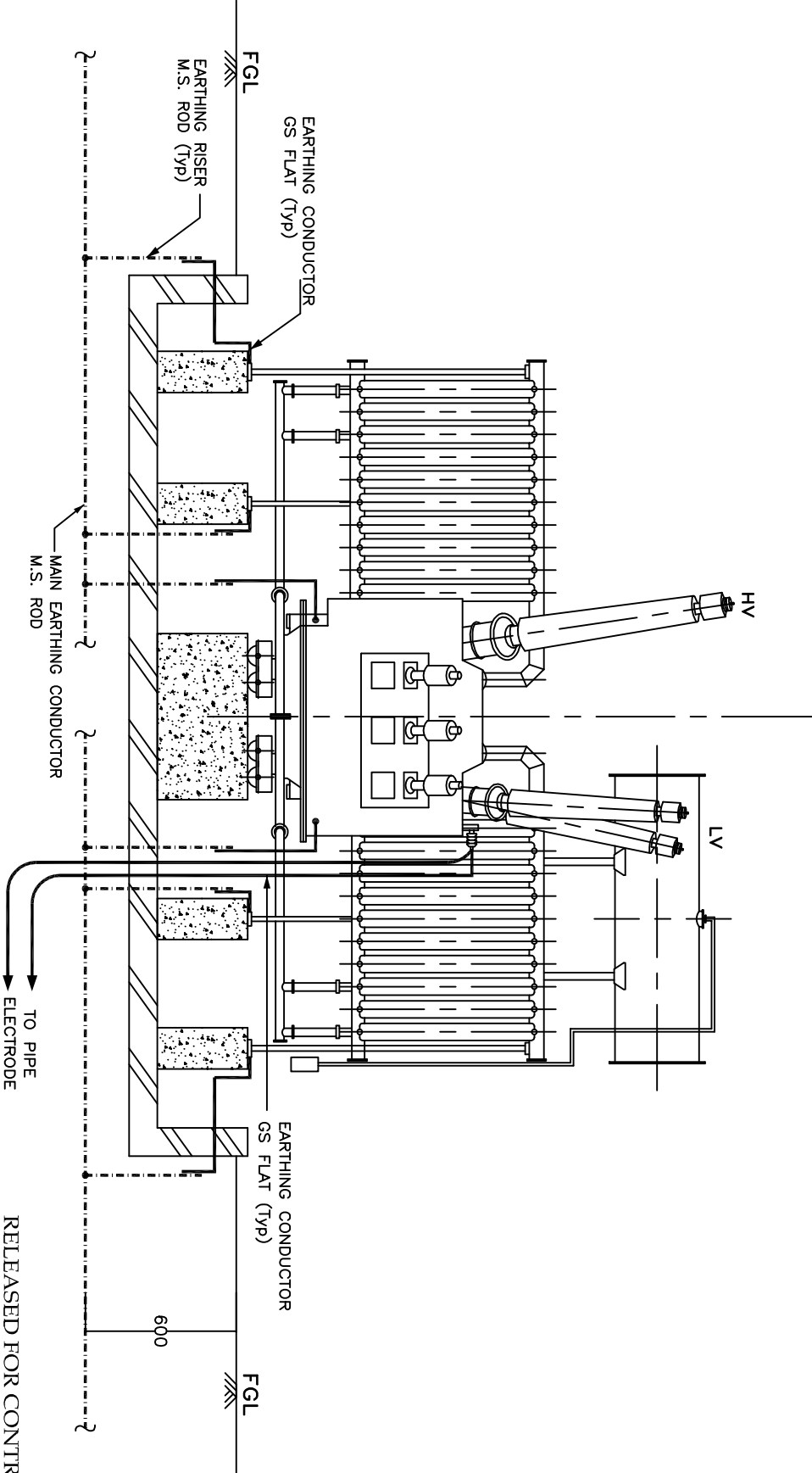


**PROJECT:- TECHNICAL SPECIFICATION-SWITCHYARD ERECTION**

TITLE:- STANDARD EARTHING DETAILS

		Drawing No.: C/ENG/STD/EARTHINGS/09 SHEET # 7
<i>-KKS/Revise</i>	Dec-2013	
CKD BY	PRPD BY	

EARTHING OF TRANSFORMER / REACTOR



LEGEND

- 40mm $\varnothing$  MS ROD
- 75 x 12 mm GS FLAT
- 50 x 6 mm GS FLAT

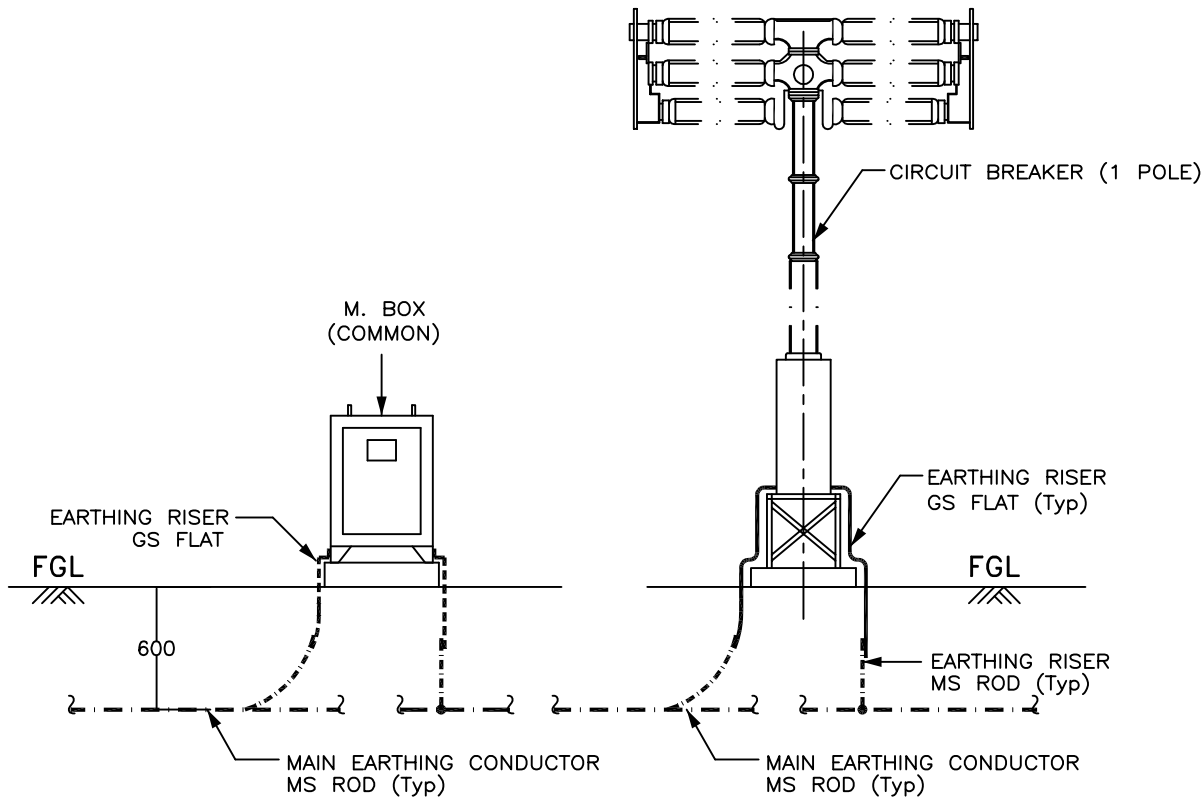
END VIEW

POWER GRID CORPORATION OF INDIA LIMITED ( A Government of India Enterprise ) पुनर्विभाग			
PROJECT :- TECHNICAL SPECIFICATION- SWITCHYARD ERECTION			
TITLE:- STANDARD EARTHING DETAILS			
CKD BY	PRPD BY	Date	Drawing No.: C/ENG/STD/EARTHINGS/09 SHEET # 8
26/06/2013	26/06/2013	Dec-2013	

RELEASED FOR CONTRUCTION



# EARTHING OF CIRCUIT BREAKER



## ELEVATION

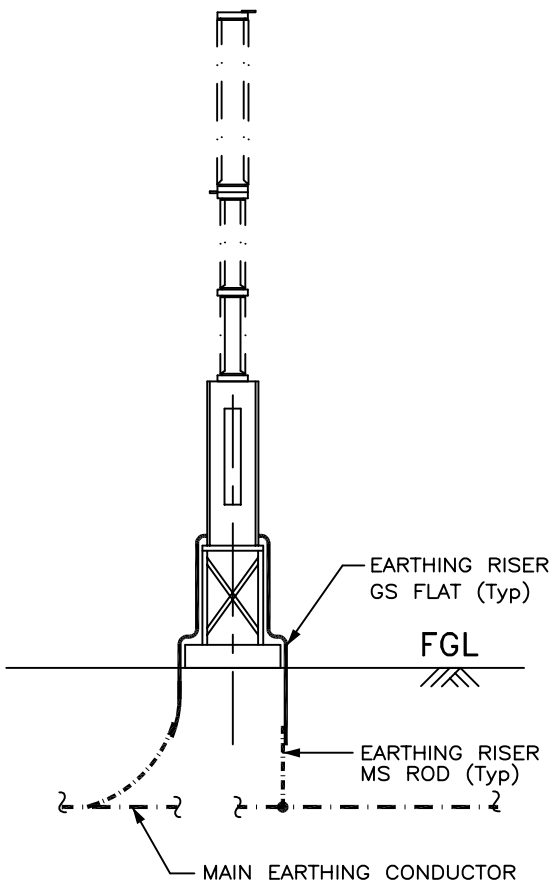
### NOTES :-

1. No. OF RISERS FOR CIRCUIT BREAKER = 2 Nos. / PHASE
1. No. OF RISERS FOR LADDER (IF Applicable) = 2 Nos.
2. No. OF RISERS FOR MAR. BOX = 2 Nos.
3. CLEAT CLAMP SHALL BE PROVIDED AT 1000mm INTERVAL.

### LEGEND

	40mm $\phi$ MS ROD
	75 x 12 mm GS FLAT
	50 x 6 mm GS FLAT

RELEASED FOR CONTRUCTION



**POWER GRID CORPORATION  
OF INDIA LIMITED**  
( A Government of India Enterprise )

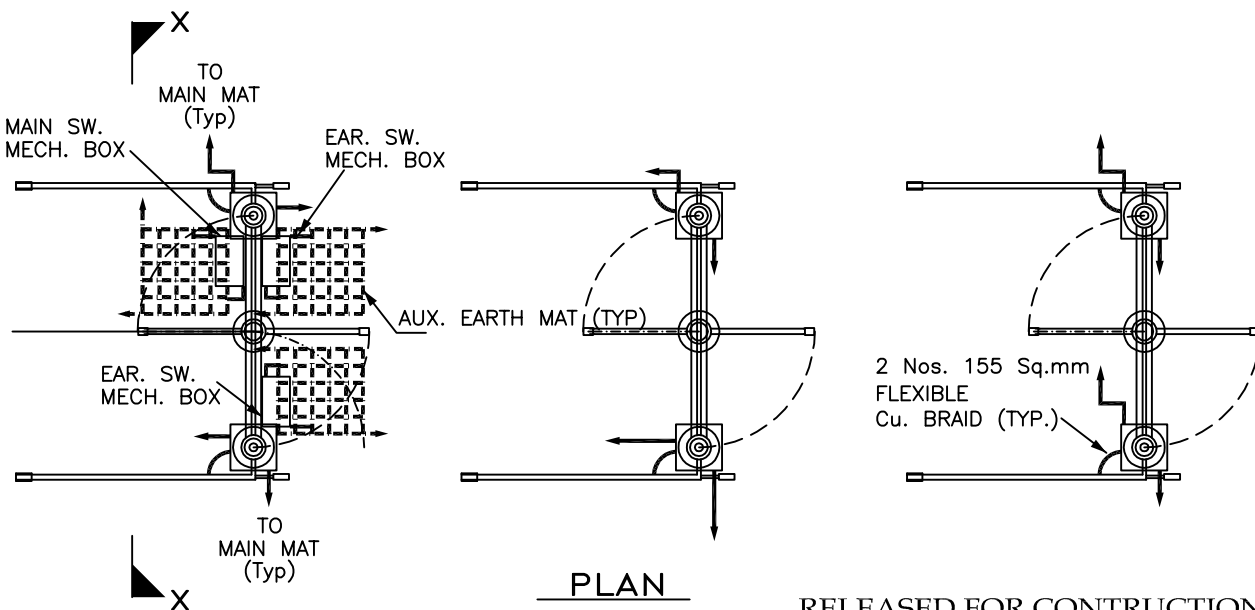
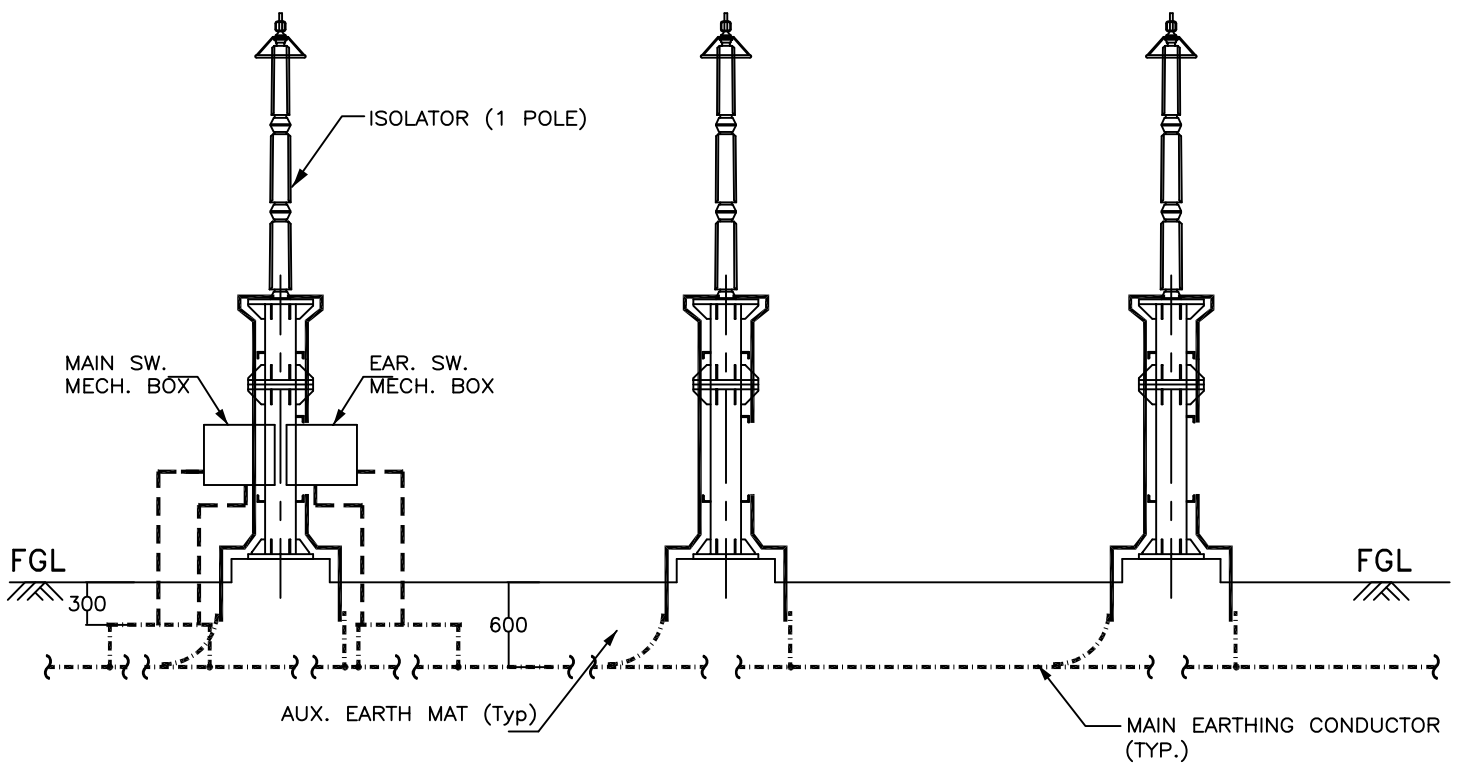


**PROJECT :- TECHNICAL SPECIFICATION-  
SWITCHYARD ERECTION**

**TITLE:- STANDARD EARTHING DETAILS**

<i>KK Parkar</i>	<i>KK Parkar</i>	Dec-2013	Drawing No.:
CKD BY	PRPD BY	Date	C/ENG/STD/EARTHINGS/09
			SHEET # 9

# EARTHING OF ISOLATOR



RELEASED FOR CONTRUCTION

**POWER GRID CORPORATION  
OF INDIA LIMITED**  
( A Government of India Enterprise )

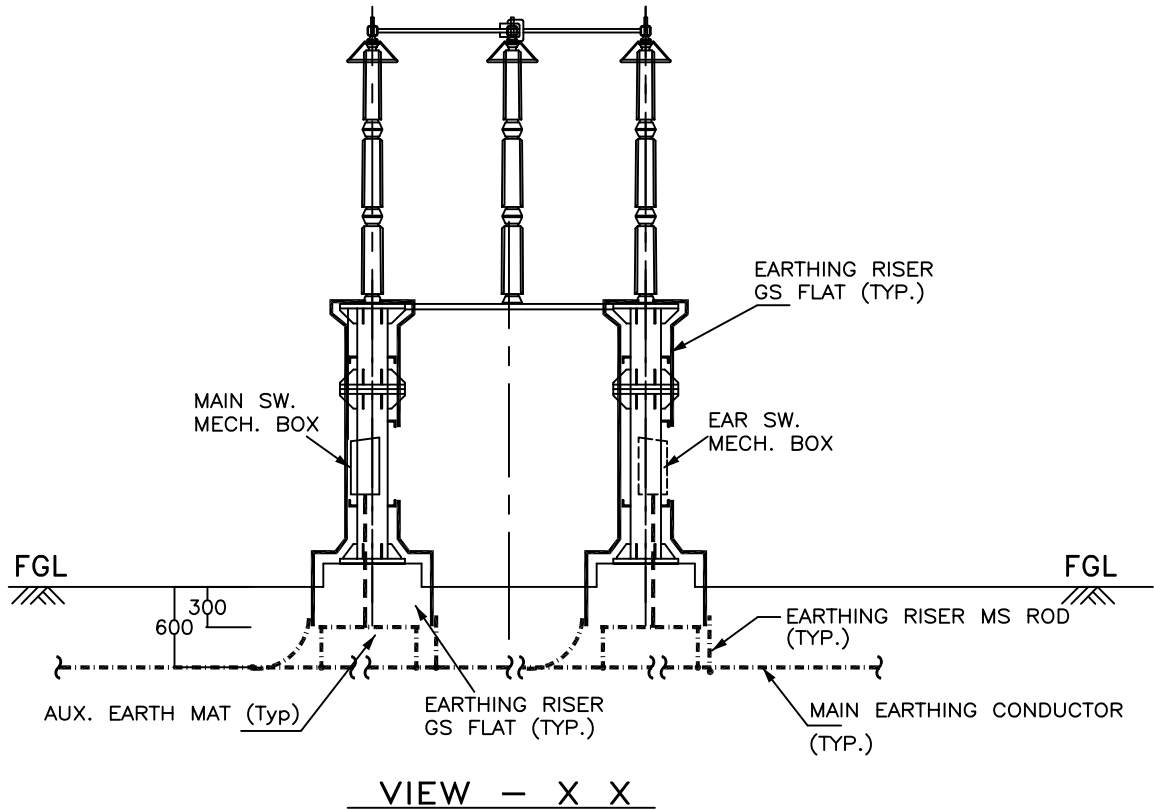


**PROJECT :- TECHNICAL SPECIFICATION-  
SWITCHYARD ERECTION**

**TITLE:- STANDARD EARTHING DETAILS**

<i>KK Parhar</i>	<i>KK Parhar</i>	Dec-2013	Drawing No.:
CKD BY	PRPD BY	Date	C/ENG/STD/EARTHINGS/09
			SHEET # 10

## EARTHING OF ISOLATOR (1 PH)




### LEGEND

	40mm $\phi$ MS ROD
	75 x 12 mm GS FLAT
	50 x 6 mm GS FLAT

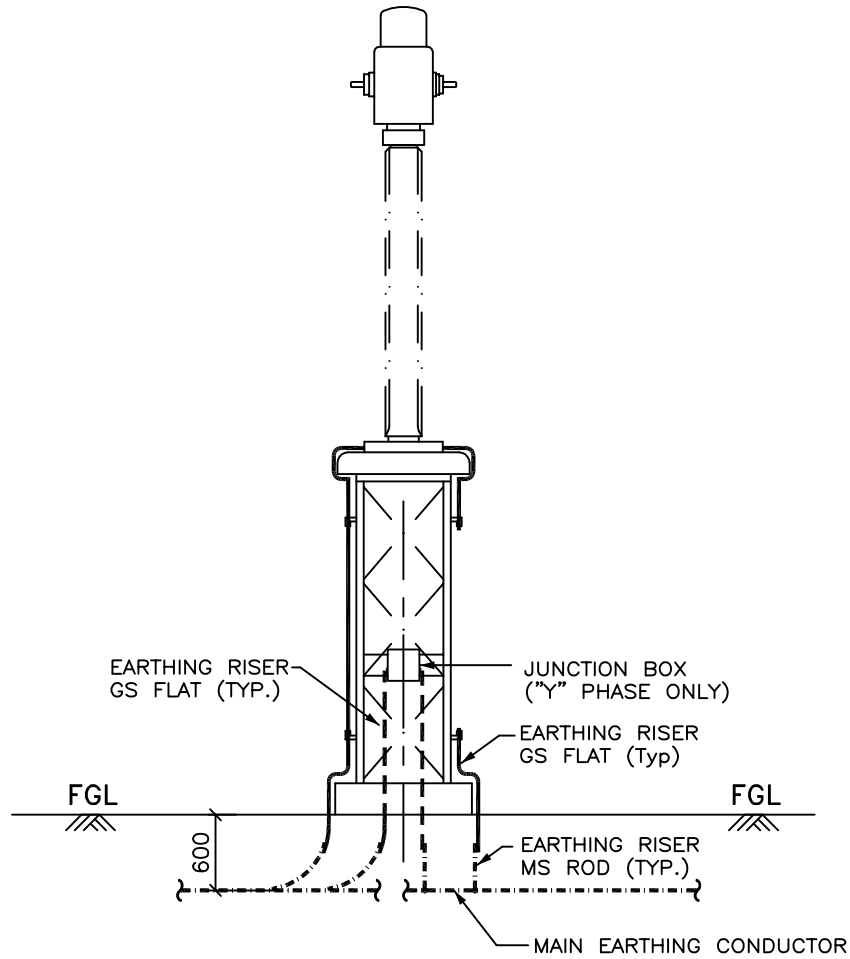
### NOTES :-

1. No. OF RISERS FOR ISOLATOR = 4 Nos. / PHASE.
2. No. OF RISERS FOR MAIN MECH. BOX = 2 Nos.
3. No. OF RISERS FOR EARTH SW. MECH. BOX = 2 Nos. / BOX.
4. No. OF AUXILIARY EARTH MAT = 1 Nos. FOR EACH MB
5. CLEAT CLAMP SHALL BE PROVIDED AT 1000mm INTERVAL.
6. NO. OF AUX. EARTH MAT IS INDICATIVE ONLY. IT SHALL BE EXECUTED AS PER ACTUAL NUMBER/POSITION OF EARTH SWITCHES.

RELEASED FOR CONTRUCTION

<b>POWER GRID CORPORATION OF INDIA LIMITED</b> <small>( A Government of India Enterprise )</small>			 <b>पावरग्रिड</b>
<b>PROJECT :- TECHNICAL SPECIFICATION- SWITCHYARD ERECTION</b>			
<b>TITLE:- STANDARD EARTHING DETAILS</b>			
<i>KK Parshar</i>	<i>KK Parshar</i>	Dec-2013	Drawing No.: C/ENG/STD/EARTHINGS/09 SHEET # 11
CKD BY	PRPD BY	Date	

## EARTHING OF CURRENT TRANSFORMER (1 PH)



### ELEVATION

#### LEGEND

— · — · —	40mm $\phi$ MS ROD
————	75 x 12 mm GS FLAT
-----	50 x 6 mm GS FLAT

#### NOTES :-

1. No. OF RISERS = 2 Nos. / PHASE.
2. No. OF RISERS FOR JUN. BOX = 2 Nos.
3. CLEAT CLAMP SHALL BE PROVIDED AT 1000mm INTERVAL.

RELEASED FOR CONTRUCTION

POWER GRID CORPORATION  
OF INDIA LIMITED  
( A Government of India Enterprise )

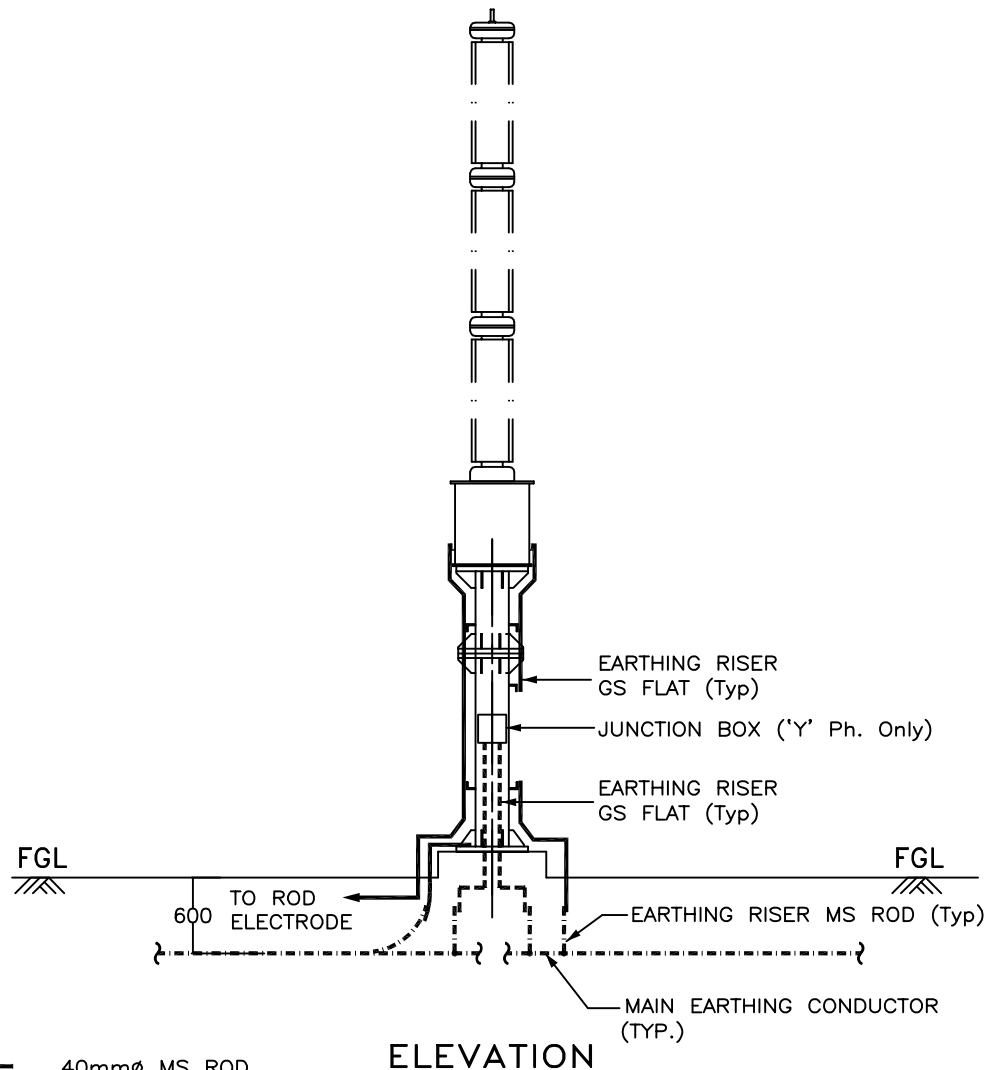


PROJECT :- TECHNICAL SPECIFICATION-  
SWITCHYARD ERECTION

TITLE:- STANDARD EARTHING DETAILS

<i>KK Parshar</i>	<i>KK Parshar</i>	Dec-2013	Drawing No.:
CKD BY	PRPD BY	Date	C/ENG/STD/EARTHINGS/09
			SHEET # 12

## EARTHING OF CAPACITIVE VOLTAGE TRANSFORMER (1 PH)



### LEGEND

	40mm $\phi$ MS ROD
	75 x 12 mm GS FLAT
	50 x 6 mm GS FLAT

### NOTES :-

1. No. OF RISERS = 3 Nos. / PHASE.
2. No. OF RISERS FOR J. BOX = 2 Nos.
3. No. OF ROD ELECTRODE REQUIRED = 1 No. / PHASE.
4. CLEAT CLAMP SHALL BE PROVIDED AT 1000mm INTERVAL.

RELEASED FOR CONTRUCTION

POWER GRID CORPORATION  
OF INDIA LIMITED  
( A Government of India Enterprise )

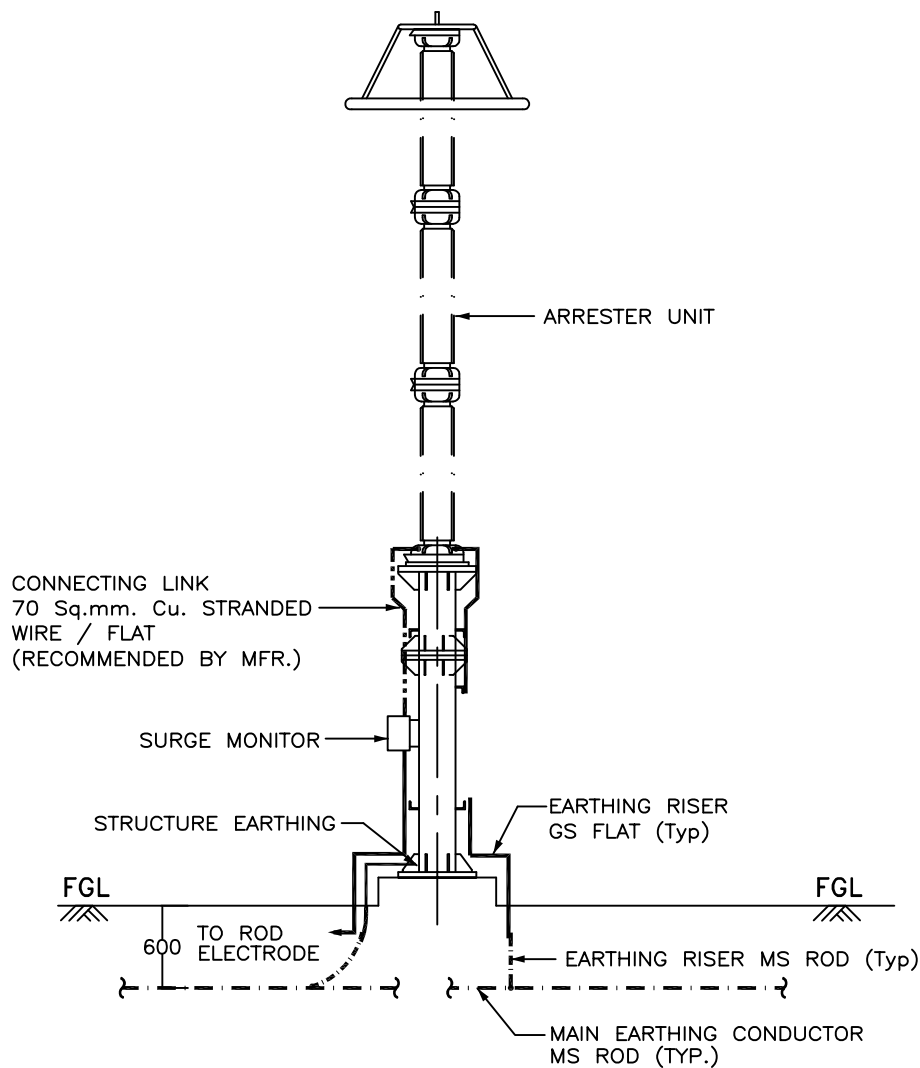


PROJECT :- TECHNICAL SPECIFICATION-  
SWITCHYARD ERECTION

TITLE:- STANDARD EARTHING DETAILS

<i>KK Parshar</i>	<i>KK Parshar</i>	Dec-2013	Drawing No.:
CKD BY	PRPD BY	Date	C/ENG/STD/EARTHINGS/09
			SHEET # 13

## EARTHING OF SURGE ARRESTER (1PH)



### ELEVATION

#### LEGEND

- · — · — 40mm $\phi$  MS ROD
- 75 x 12 mm GS FLAT

#### NOTES :-

- 1 . No. OF RISERS = 3 Nos. / PHASE.
- 2 . No. OF ROD ELECTRODE REQUIRED = 1 No. / PHASE.
- 3 . CLEAT CLAMP SHALL BE PROVIDED AT 1000mm INTERVAL.

RELEASED FOR CONTRUCTION

POWER GRID CORPORATION  
OF INDIA LIMITED  
( A Government of India Enterprise )



PROJECT :- TECHNICAL SPECIFICATION-  
SWITCHYARD ERECTION

TITLE:- STANDARD EARTHING DETAILS

*KK Parkar*

CKD BY

*KK Parkar*

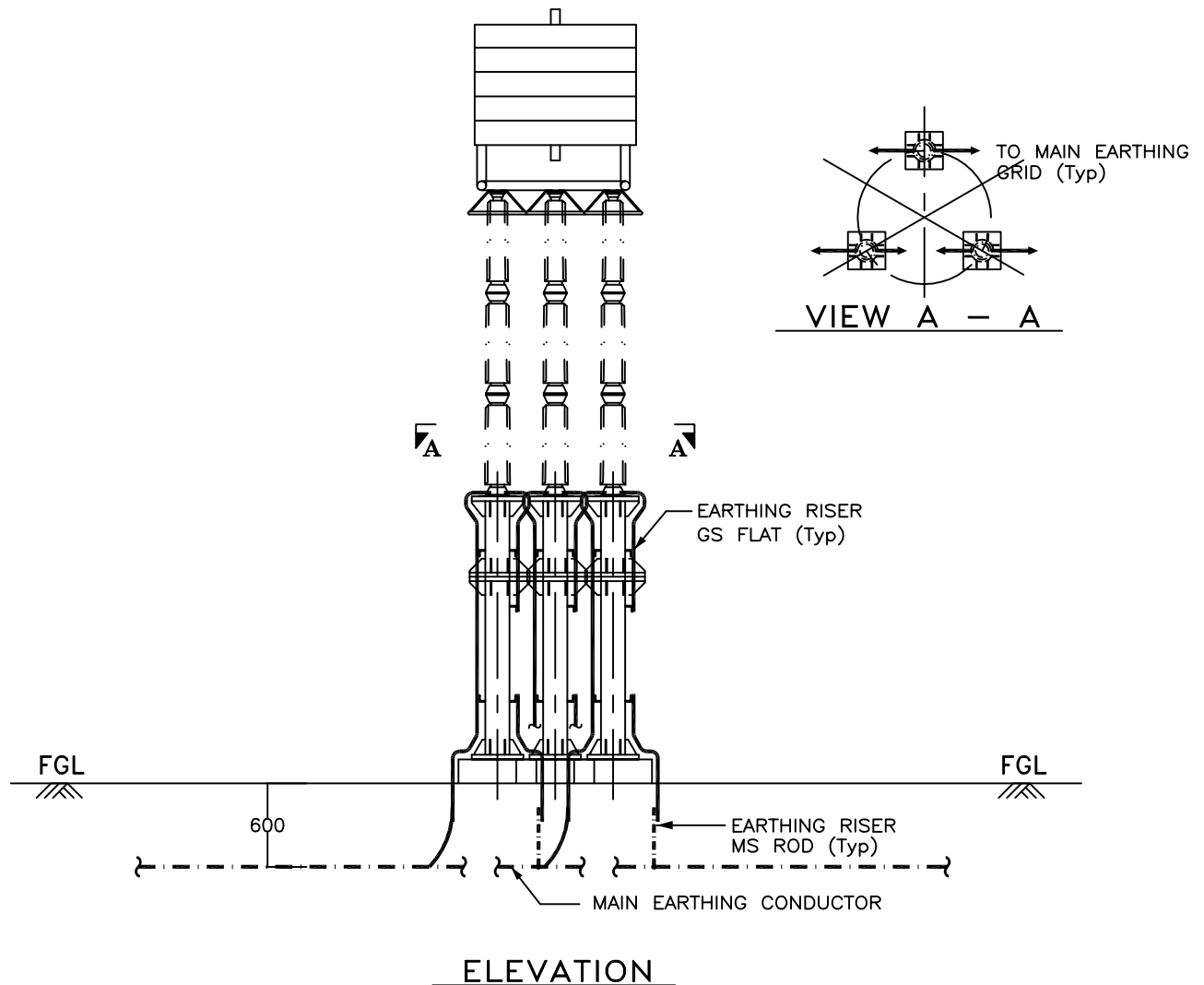
PRPD BY

Dec-2013

Date

Drawing No.:  
C/ENG/STD/EARTHINGS/09  
SHEET # 14

## EARTHING OF WAVE TRAP (1PH)




### LEGEND

- 40mm $\phi$  MS ROD  
 75 x 12 mm GS FLAT

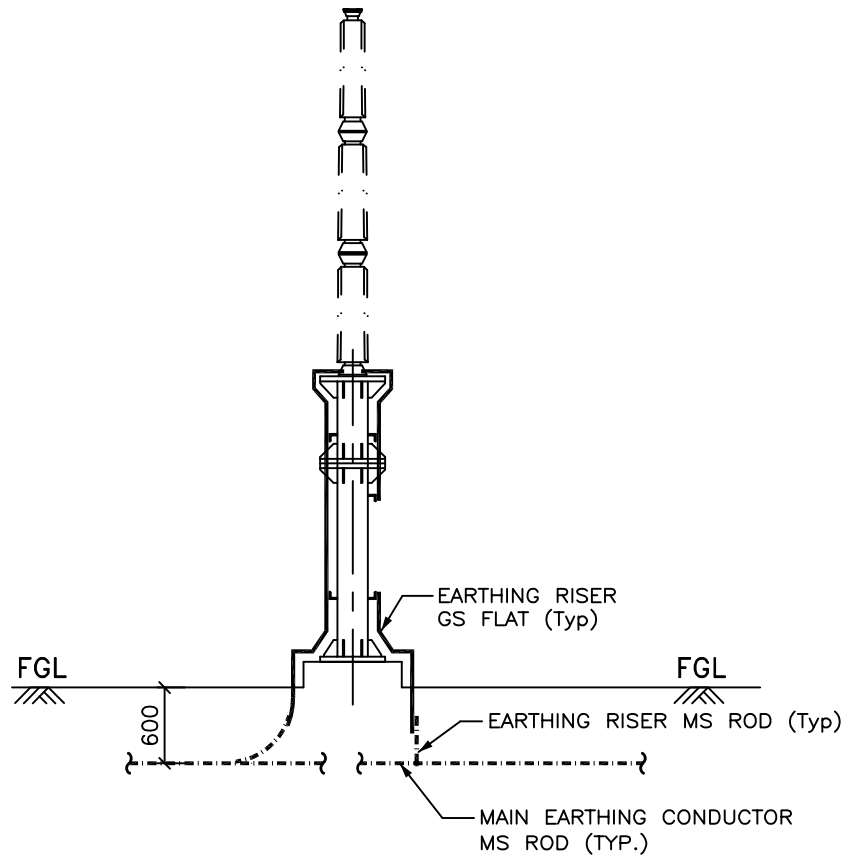
### NOTE :-

1. No. OF RISERS = 6 Nos. / PHASE.
2. CLEAT CLAMP SHALL BE PROVIDED AT 1000mm INTERVAL.

RELEASED FOR CONTRUCTION

<b>POWER GRID CORPORATION OF INDIA LIMITED</b> <small>( A Government of India Enterprise )</small>			 पावरग्रिड
<b>PROJECT :- TECHNICAL SPECIFICATION- SWITCHYARD ERECTION</b>			
<b>TITLE:- STANDARD EARTHING DETAILS</b>			
<i>KK Parshar</i>	<i>KK Parshar</i>	Dec-2013	Drawing No.: C/ENG/STD/EARTHINGS/09 SHEET # 15
CKD BY	PRPD BY	Date	

## EARTHING OF POST INSULATOR (1PH)



### ELEVATION

#### LEGEND

- · — · — 40mm $\phi$  MS ROD  
—— 75 x 12 mm GS FLAT

#### NOTES :-

1. No. OF RISERS = 2 Nos. / PHASE.
2. CLEAT CLAMP SHALL BE PROVIDED AT 1000mm INTERVAL.

RELEASED FOR CONTRUCTION

POWER GRID CORPORATION  
OF INDIA LIMITED  
( A Government of India Enterprise )



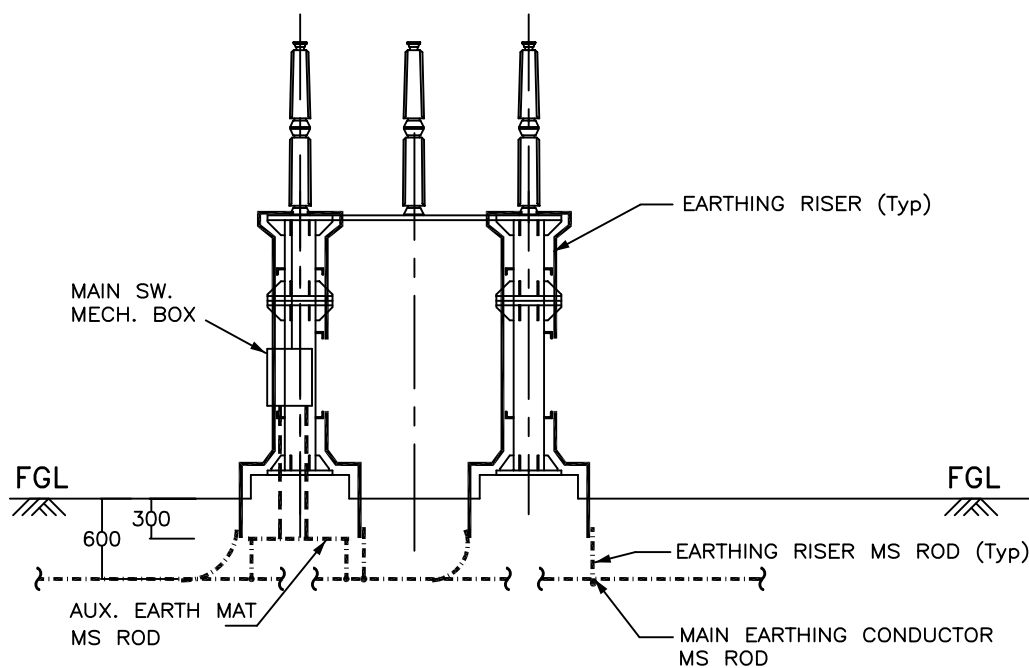
PROJECT :- TECHNICAL SPECIFICATION-  
SWITCHYARD ERECTION

TITLE:- STANDARD EARTHING DETAILS

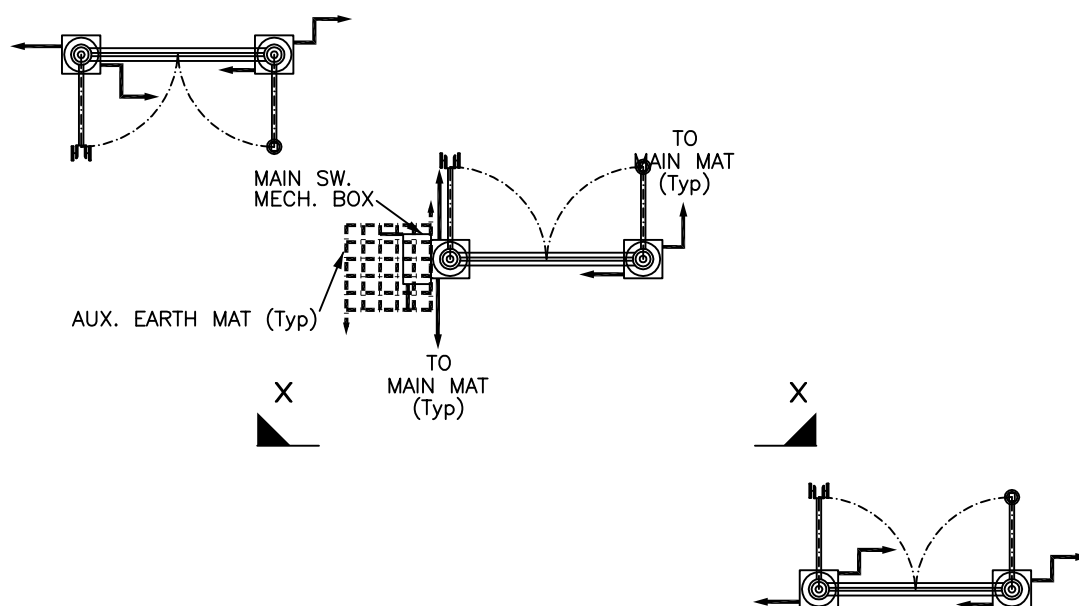
<i>KK Parhar</i>	<i>KK Parhar</i>	Dec-2013	Drawing No.:
CKD BY	PRPD BY	Date	C/ENG/STD/EARTHINGS/09 SHEET # 16



# TANDEM ISOLATOR



VIEW - X X



## PLAN

RELEASED FOR CONSTRUCTION

POWER GRID CORPORATION  
OF INDIA LIMITED  
( A Government of India Enterprise )

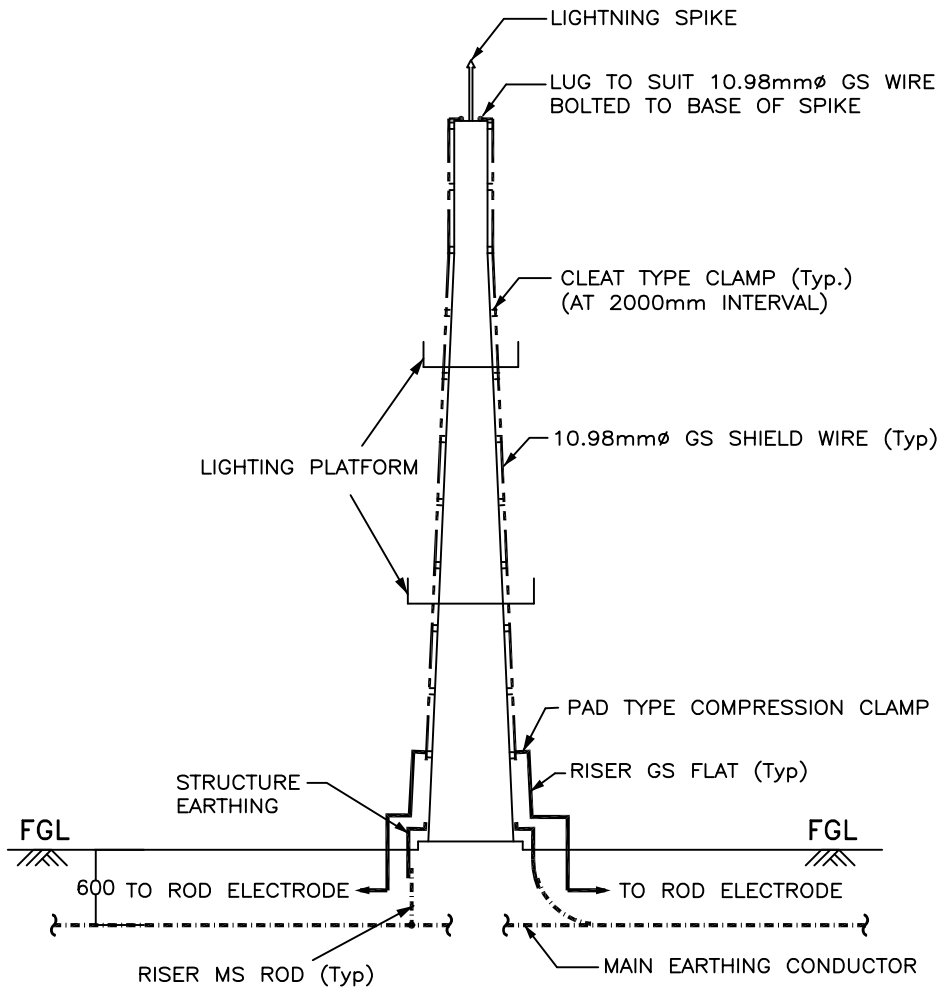


PROJECT :- TECHNICAL SPECIFICATION-  
SWITCHYARD ERECTION

TITLE:- STANDARD EARTHING DETAILS

<i>HN Parker</i>	<i>HN Parker</i>	Dec-2013	Drawing No.: C/ENG/STD/EARTHINGS/09 SHEET # 17
CKD BY	PRPD BY	Date	

## EARTHING OF LIGHTNING MAST



### ELEVATION

#### NOTES :-

1. No. OF RISERS = 4 Nos.
2. No. OF ROD ELECTRODE REQUIRED = 2 Nos.
3. No. OF PAD TYPE CLAMP = 2 Nos.

#### LEGEND

- · — · — 40mm $\phi$  MS ROD
- 75 x 12 mm GS FLAT

RELEASED FOR CONTRUCTION

POWER GRID CORPORATION  
OF INDIA LIMITED  
( A Government of India Enterprise )

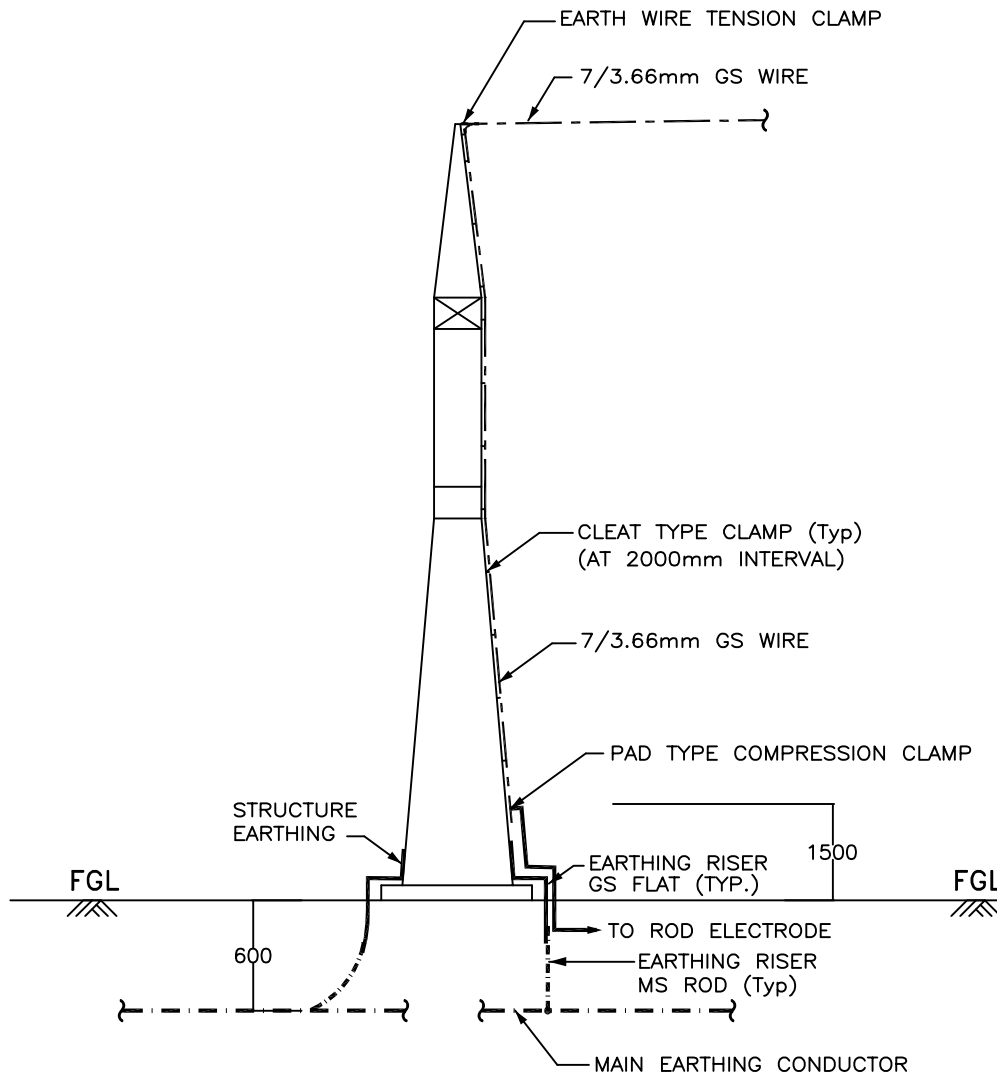


PROJECT :- TECHNICAL SPECIFICATION-  
SWITCHYARD ERECTION

TITLE:- STANDARD EARTHING DETAILS

<i>KK Parkar</i>	<i>KK Parkar</i>	Dec-2013	Drawing No.:
CKD BY	PRPD BY	Date	C/ENG/STD/EARTHINGS/09
			SHEET # 18

## EARTHING OF TOWER WITH PEAK



### ELEVATION

### LEGEND

- 40mm $\phi$  MS ROD  
— 75 x 12 mm GS FLAT

### NOTES :-

1. No. OF RISERS = 3 Nos.
2. No. OF ROD ELECTRODE REQUIRED = 1 No.
3. No. OF PAD TYPE CLAMP = 1 No.

RELEASED FOR CONTRUCTION

POWER GRID CORPORATION  
OF INDIA LIMITED  
( A Government of India Enterprise )

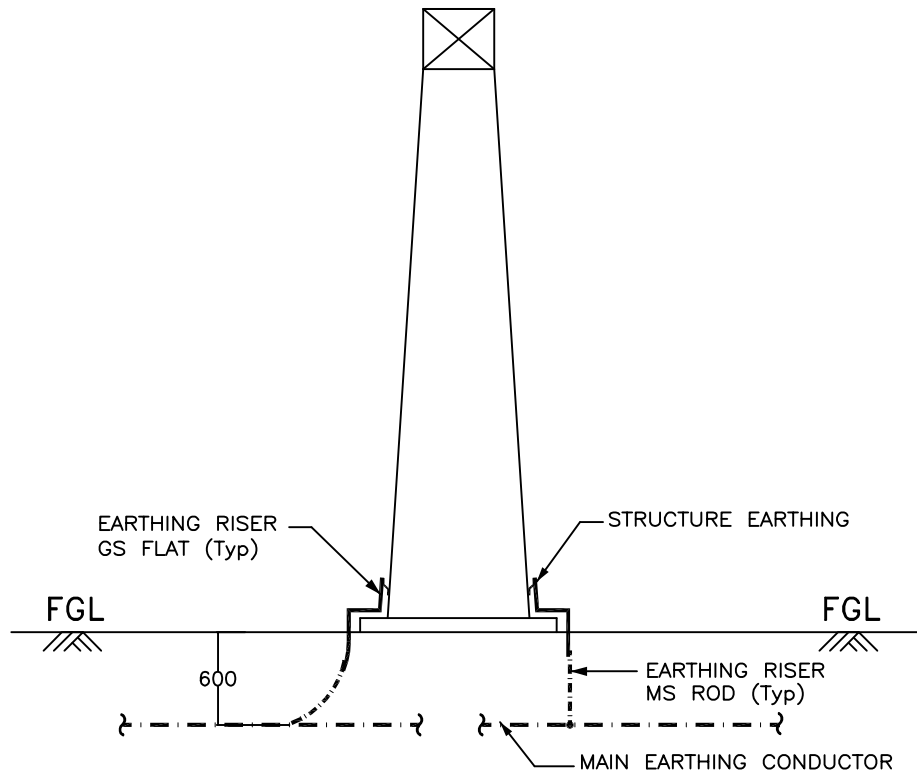


PROJECT :- TECHNICAL SPECIFICATION-  
SWITCHYARD ERECTION

TITLE:- STANDARD EARTHING DETAILS



CKD BY	PRPD BY	Date	Drawing No.: C/ENG/STD/EARTHINGS/09 SHEET # 19
<i>KK Parhar</i>	<i>KK Parhar</i>	Dec-2013	

## EARTHING OF TOWER WITHOUT PEAK



### ELEVATION

#### LEGEND

	40mm $\varnothing$ MS ROD
	75 x 12 mm GS FLAT

#### NOTES :-

1. No. OF RISERS = 2 Nos.

RELEASED FOR CONTRUCTION

POWER GRID CORPORATION  
OF INDIA LIMITED  
( A Government of India Enterprise )

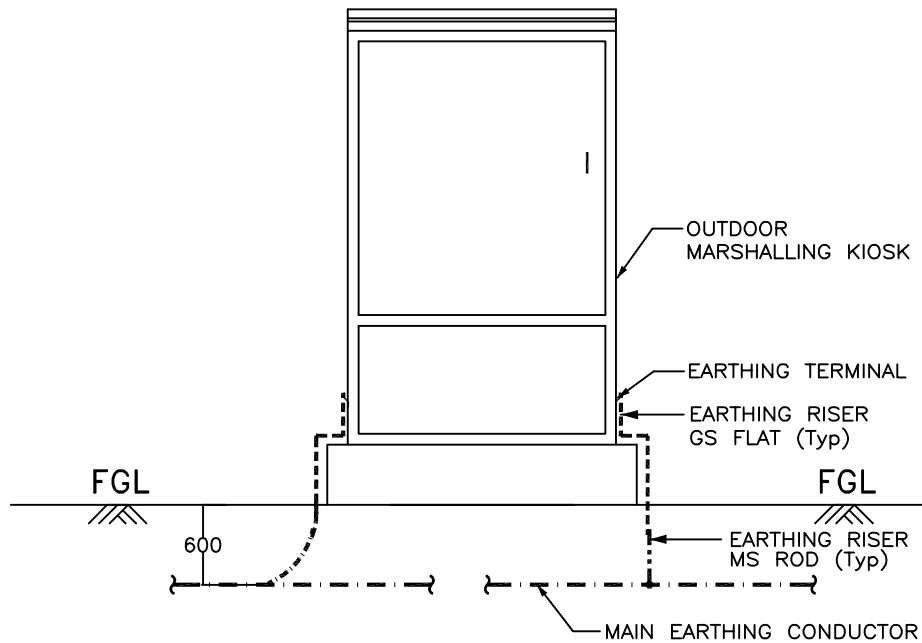


PROJECT :- TECHNICAL SPECIFICATION-  
SWITCHYARD ERECTION

TITLE:- STANDARD EARTHING DETAILS

<i>KK Parkar</i>	<i>KK Parkar</i>	Dec-2013	Drawing No.:
CKD BY	PRPD BY	Date	C/ENG/STD/EARTHINGS/09 SHEET # 20

## EARTHING OF BAY MARSHALLING BOX



### ELEVATION

#### LEGEND

— · — · — · —	40mm $\varnothing$ MS ROD
—————	75 x 12 mm GS FLAT
-----	50 x 6 mm GS FLAT

#### NOTE :-

1. No. OF RISERS = 2 Nos.

RELEASED FOR CONTRUCTION

POWER GRID CORPORATION  
OF INDIA LIMITED  
( A Government of India Enterprise )

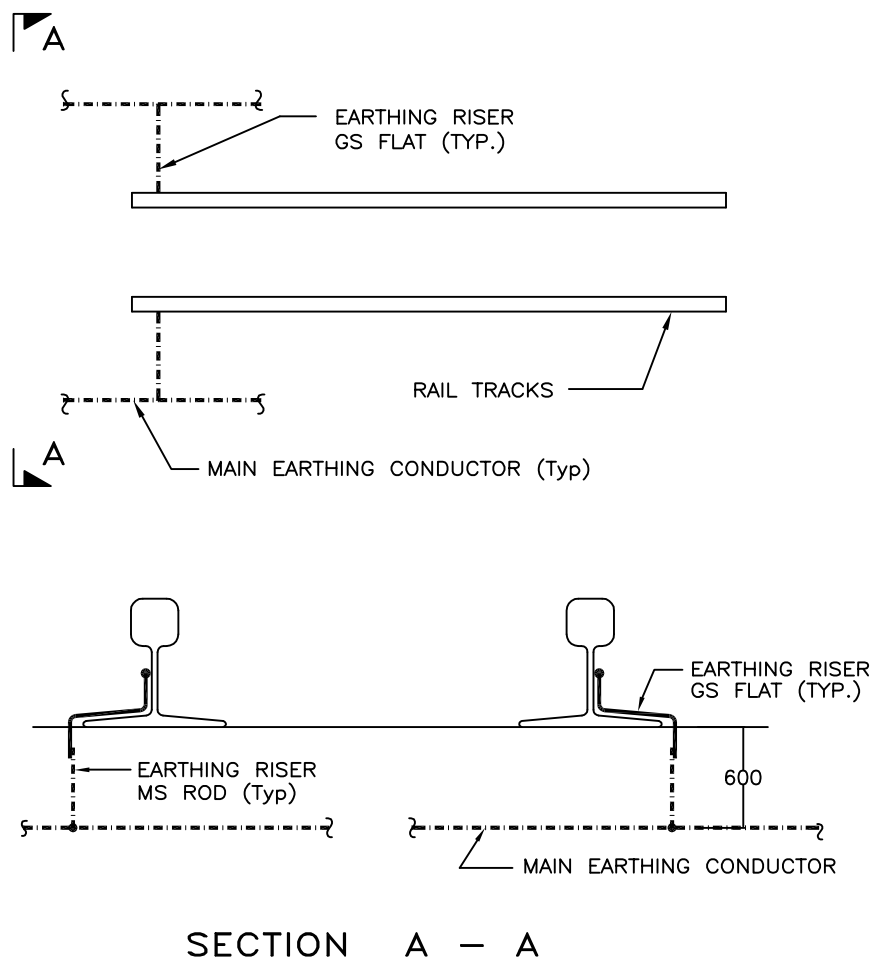


PROJECT :- TECHNICAL SPECIFICATION-  
SWITCHYARD ERECTION

TITLE:- STANDARD EARTHING DETAILS

<i>KK Parhar</i>	<i>KK Parhar</i>	Dec-2013	Drawing No.:
CKD BY	PRPD BY	Date	C/ENG/STD/EARTHINGS/09 SHEET # 21

## EARTHING OF RAIL TRACK



### LEGEND

	40mm $\phi$ MS ROD
	75 x 12 mm GS FLAT

### NOTES :-

1. EACH RAIL SHALL BE EARTHED AT 30M INTERVAL AND ALSO AT BOTH ENDS.

RELEASED FOR CONTRUCTION

POWER GRID CORPORATION  
OF INDIA LIMITED  
( A Government of India Enterprise )

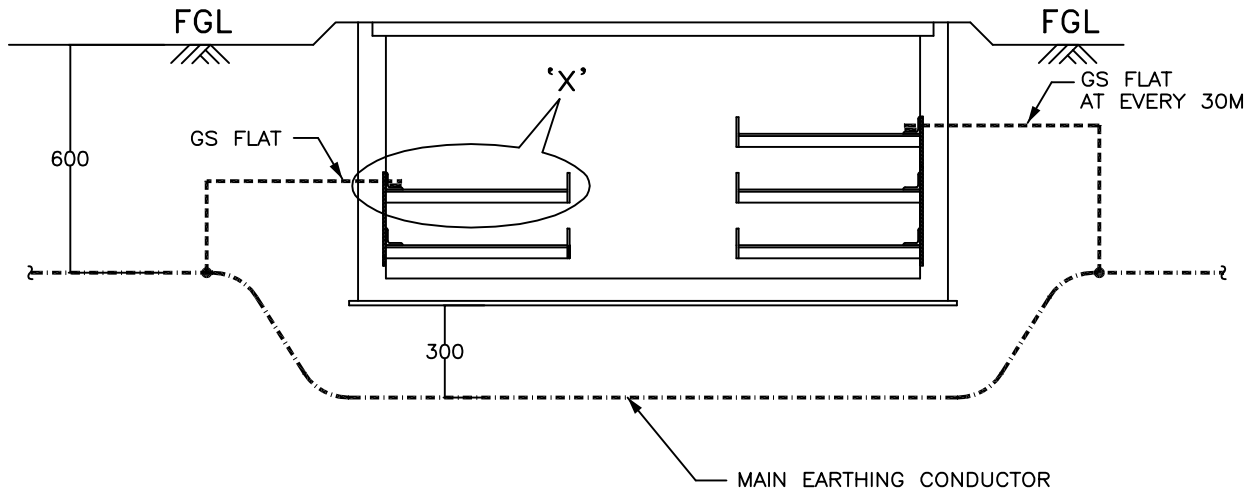


PROJECT :- TECHNICAL SPECIFICATION-  
SWITCHYARD ERECTION

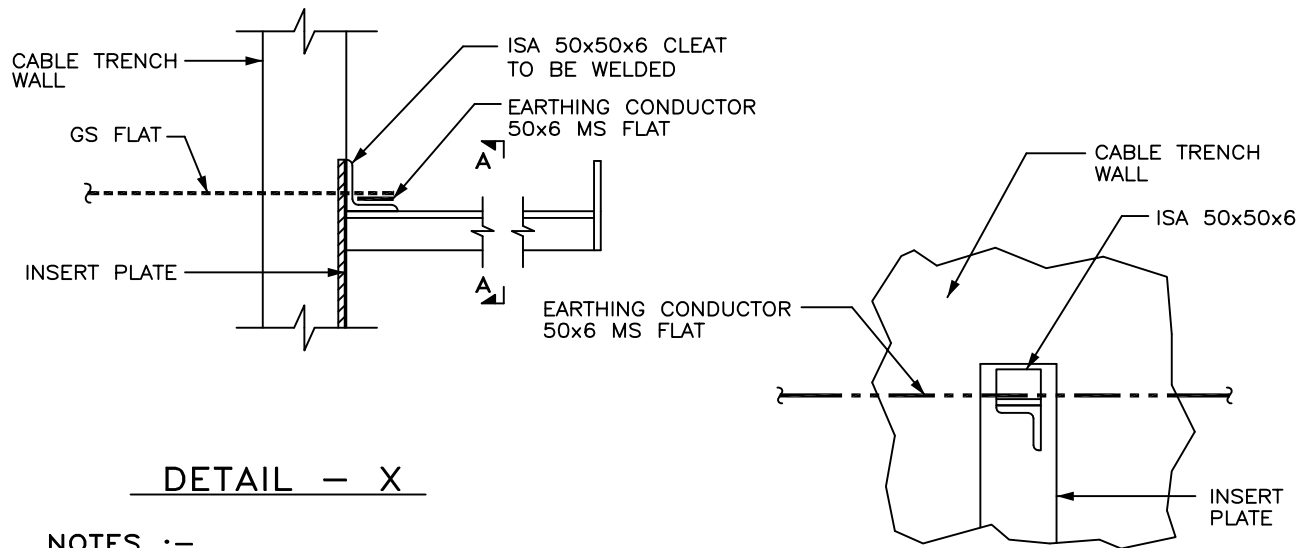
TITLE:- STANDARD EARTHING DETAILS

<i>KK Parkar</i>	<i>KK Parkar</i>	Dec-2013	Drawing No.:
CKD BY	PRPD BY	Date	C/ENG/STD/EARTHINGS/09 SHEET # 22

## EARTHING OF CABLE TRENCH



### TYPICAL CROSS SECTION OF CABLE TRENCH



### DETAIL - X

#### NOTES :-

1. MS FLAT SHALL RUN ON TOP TIER ALL ALONG THE CABLE TRENCHES & WELDED TO EACH OF THE RACKS.
2. MS FLAT SHALL BE EARTHED AT 30M INTERVAL AND ALSO AT BOTH ENDS.

### SECTION A - A

RELEASED FOR CONTRUCTION

**POWER GRID CORPORATION  
OF INDIA LIMITED**  
( A Government of India Enterprise )

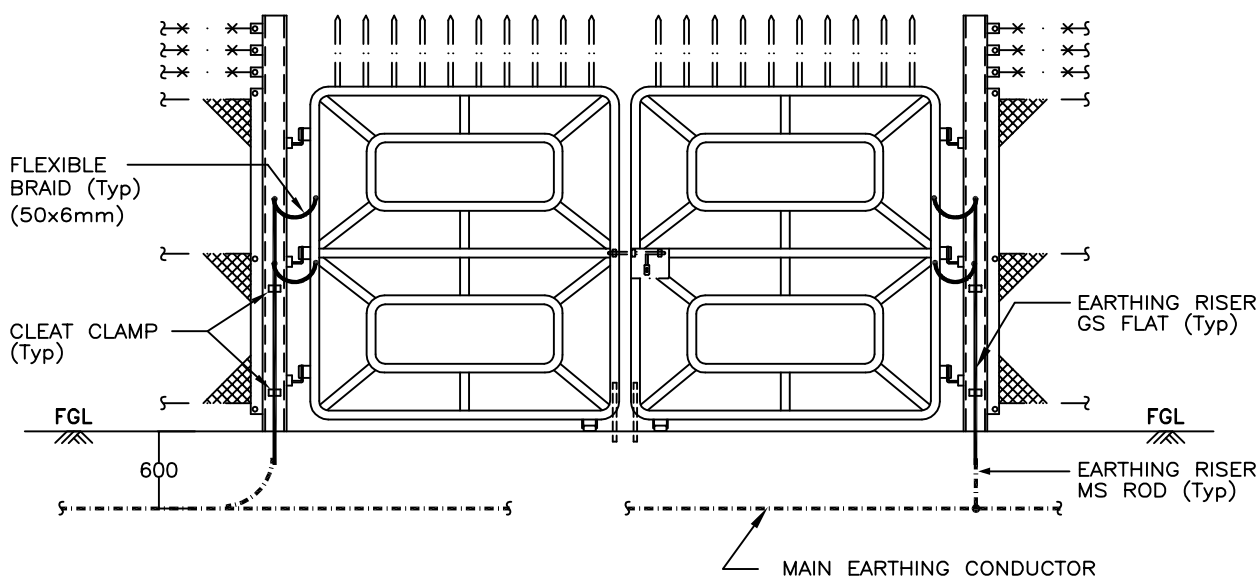


**PROJECT :- TECHNICAL SPECIFICATION-  
SWITCHYARD ERECTION**

**TITLE:- STANDARD EARTHING DETAILS**

<i>KK Parhar</i>	<i>KK Parhar</i>	Dec-2013	Drawing No.:
CKD BY	PRPD BY	Date	C/ENG/STD/EARTHINGS/09 SHEET # 23

## EARTHING OF GATES



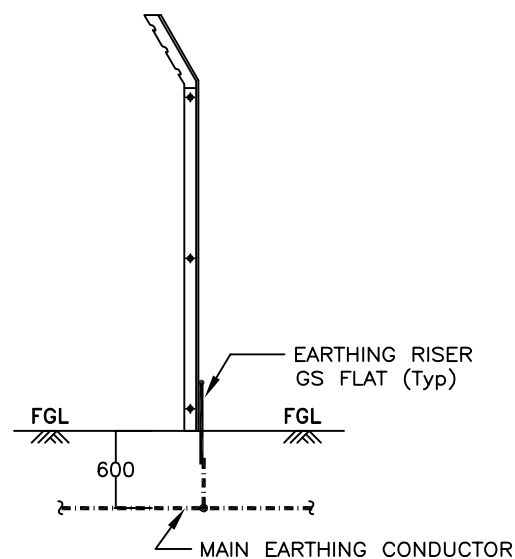
### MAIN GATE

#### LEGEND

	40mm $\varnothing$ MS ROD
	75 x 12 mm GS FLAT
	50 x 6 mm MS FLAT

#### NOTES :-

	FENCE POST	MAIN GATE
1 . No. OF RISERS REQUIRED	1	2
2 . No. OF FLEXIBLE BRAID	—	4
3. ALL GATES & EVERY ALTERNATE FENCE SHALL BE CONNECTED TO EARTHING GRID.		



### FENCE POST (ALTERNATE FENCE POST)

RELEASED FOR CONTRUCTION

**POWER GRID CORPORATION  
OF INDIA LIMITED**  
( A Government of India Enterprise )



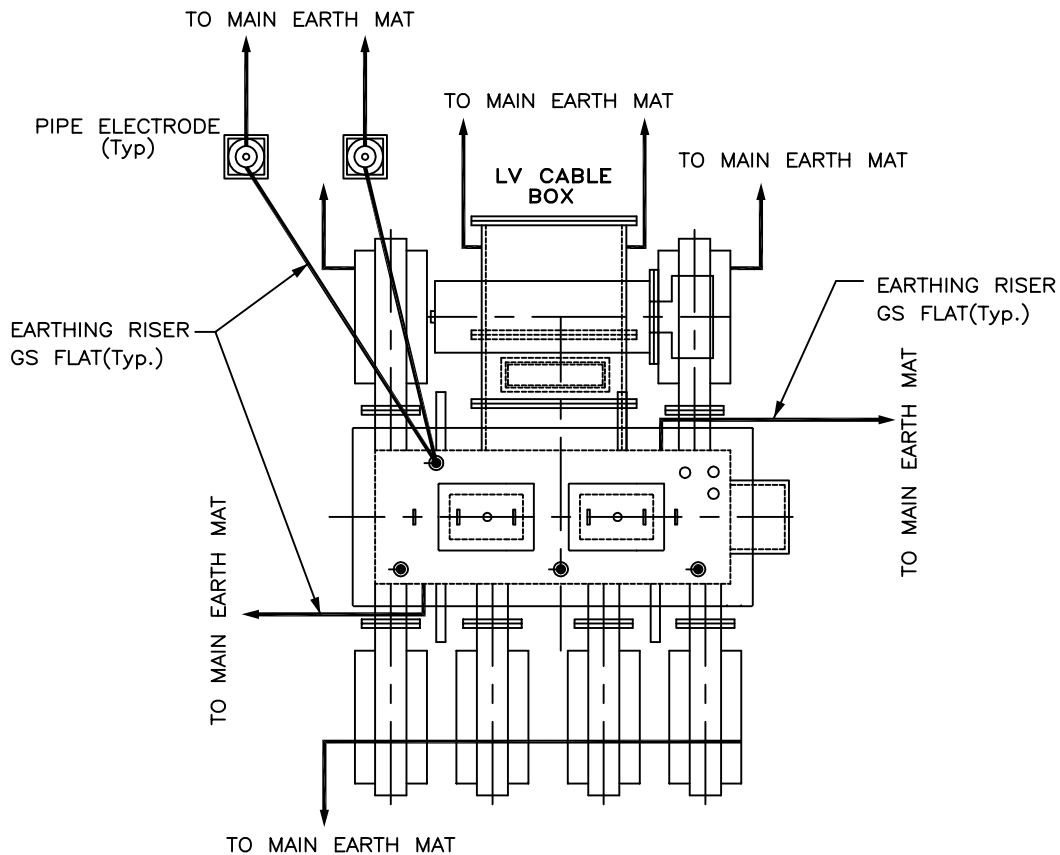
**PROJECT :- TECHNICAL SPECIFICATION-  
SWITCHYARD ERECTION**

**TITLE:- STANDARD EARTHING DETAILS**

<i>KK Parhar</i>	<i>KK Parhar</i>	Dec-2013	Drawing No.:
CKD BY	PRPD BY	Date	C/ENG/STD/EARTHINGS/09
			SHEET # 24



## EARTHING OF LT TRANSFORMER



### PLAN

#### LEGEND

— · — · — · —	40mm $\varnothing$ MS ROD
—————	75 x 12 mm GS FLAT
-----	50 x 6 mm GS FLAT

#### NOTES :-

1. No. OF RISERS FOR MAIN TANK & T.M. MAR. BOX = 4 Nos.
2. No. OF RISERS FOR LV CABLE BOX & RADIATOR = 4 Nos.
3. No. OF RISERS FOR PIPE ELECTRODE = 2 Nos.
4. No. OF PIPE ELECTRODES REQUIRED = 2 Nos.

RELEASED FOR CONTRUCTION

POWER GRID CORPORATION  
OF INDIA LIMITED  
( A Government of India Enterprise )

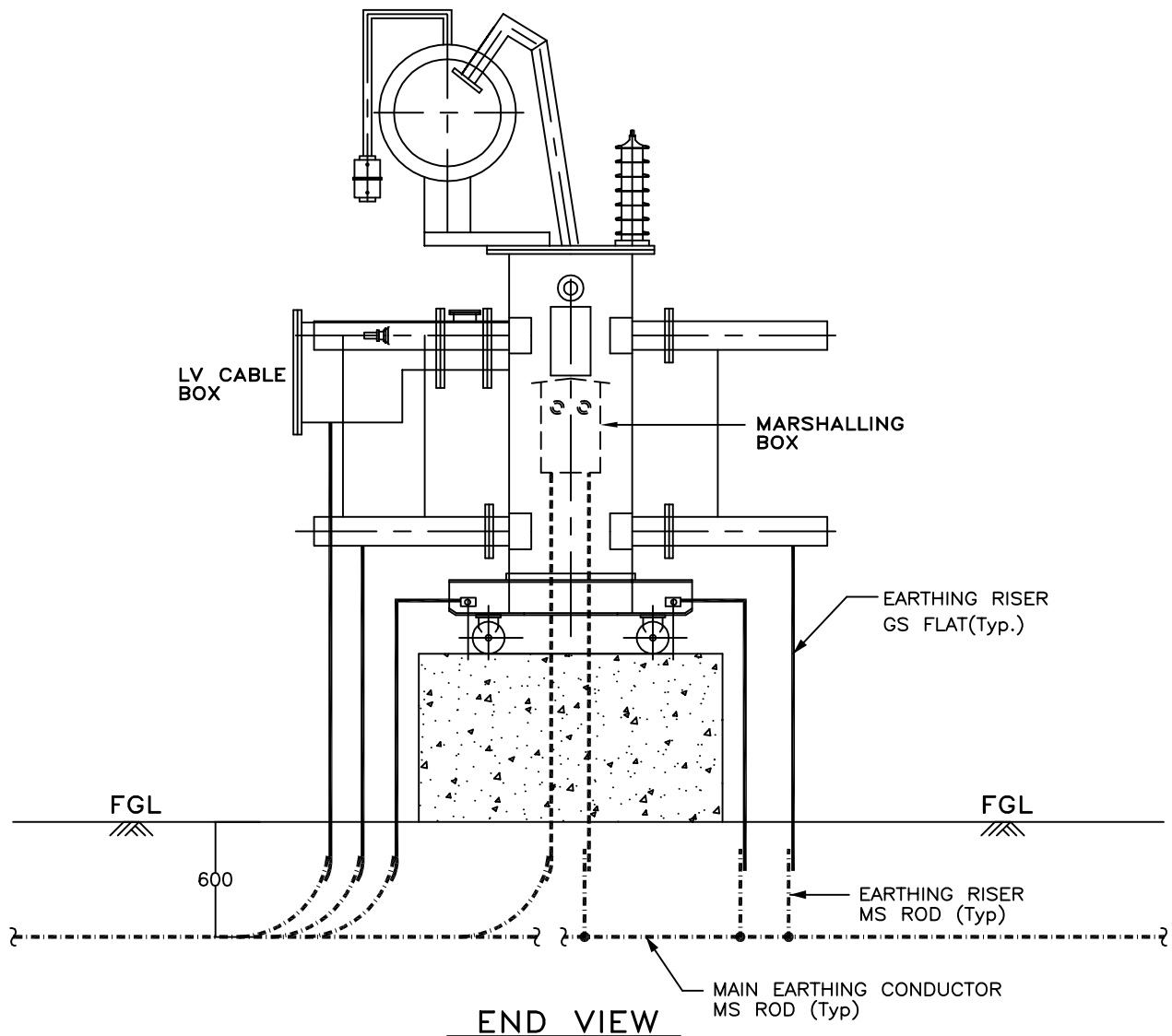


PROJECT :- TECHNICAL SPECIFICATION-  
SWITCHYARD ERECTION

TITLE:- STANDARD EARTHING DETAILS

<i>KK Parkar</i>	<i>KK Parkar</i>	Dec-2013	Drawing No.:
CKD BY	PRPD BY	Date	C/ENG/STD/EARTHINGS/09
			SHEET # 25

## EARTHING OF LT TRANSFORMER



RELEASED FOR CONTRUCTION

POWER GRID CORPORATION  
OF INDIA LIMITED  
( A Government of India Enterprise )



PROJECT :- TECHNICAL SPECIFICATION-  
SWITCHYARD ERECTION

TITLE:- STANDARD EARTHING DETAILS

*KK Parshar*

*KK Parshar*

Dec-2013

Drawing No.:  
C/ENG/STD/EARTHINGS/09  
SHEET # 26

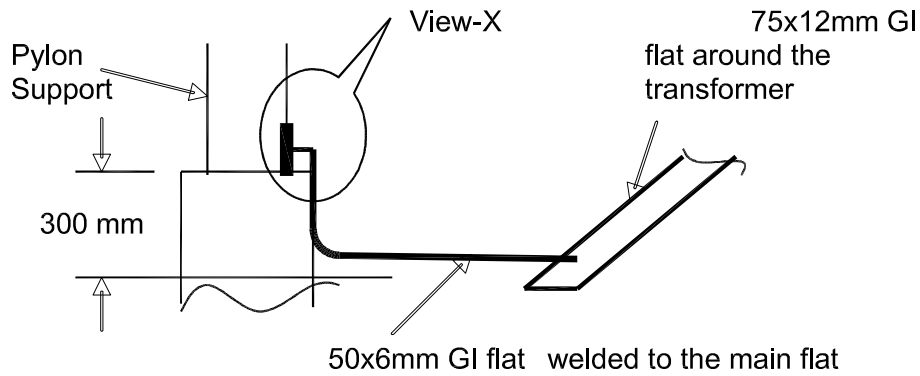
CKD BY

PRPD BY

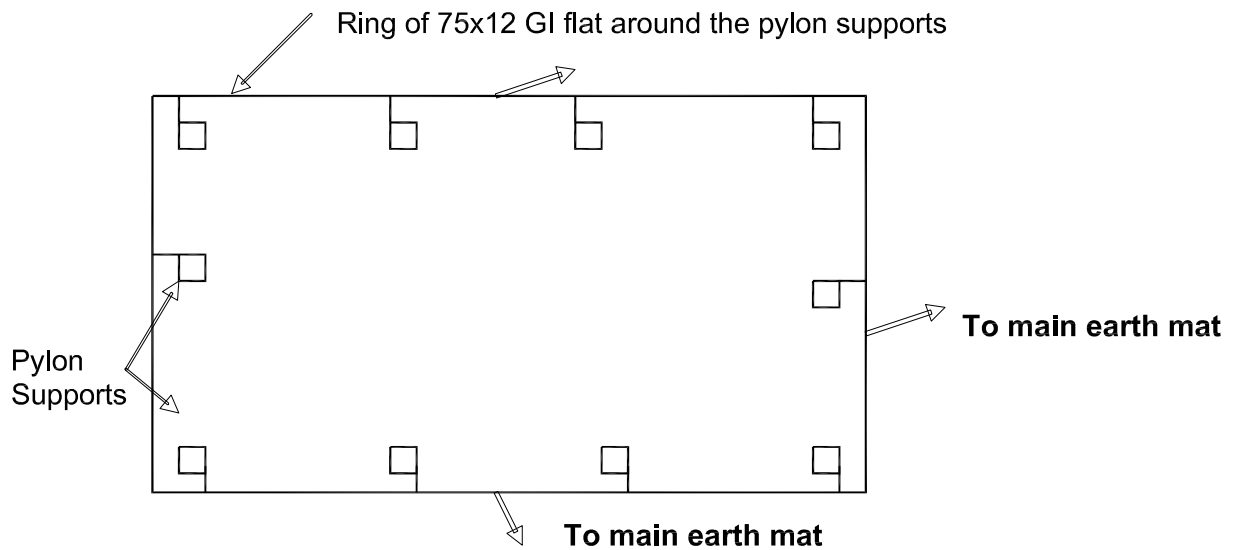
Date

## EARTHING OF PYLON SUPPORTS

Pylon supports shall be grounded through 50x6mm GI flat to the ring around the Pylon supports of 75x12mm GI flat which in turn is connected to the main grid (40 mm dia MS rod) at 2 to 3 points as available.



**Fig.- Elevation (Earthing of Pylon Supports)**



**Fig.- Layout (Earthing of Pylon Supports)**

RELEASED FOR CONTRUCTION

POWER GRID CORPORATION  
OF INDIA LIMITED  
( A Government of India Enterprise )



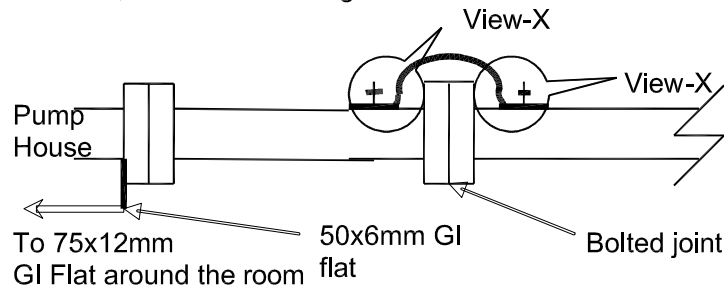
PROJECT :- TECHNICAL SPECIFICATION-  
SWITCHYARD ERECTION

TITLE:- STANDARD EARTHING DETAILS

CKD BY	PRPD BY	Date	Drawing No.: C/ENG/STD/EARTHINGS/09 SHEET # 27
<i>HKPashar</i>	<i>HKPashar</i>	Dec-2013	

## EARTHING OF HYDRANT/ HVW SPRAY PIPING

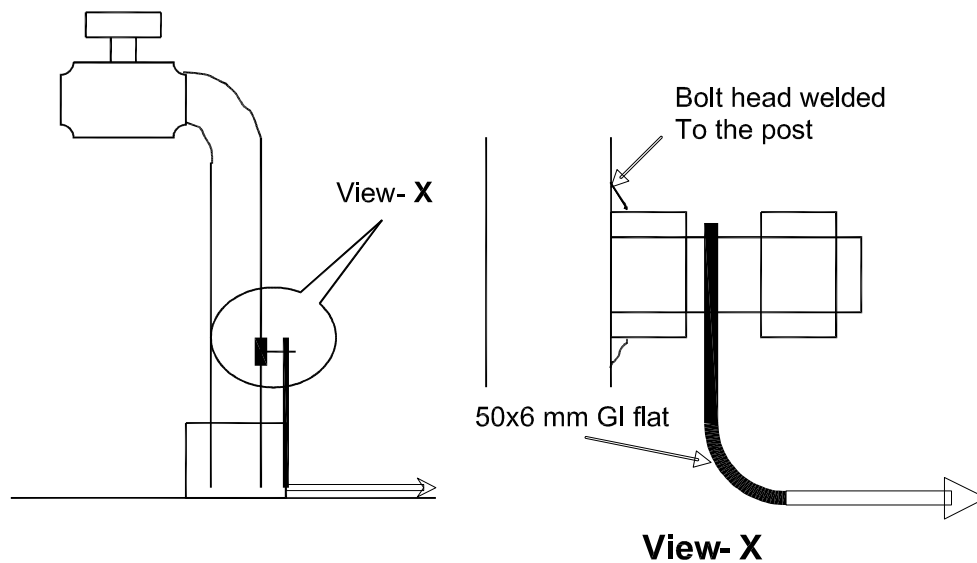
These pipes shall be grounded at pump house through 50x6mm GI flat connected to the main flat, 75x12mm running around the room.



**Fig.-Earthing of Hydrant / HVW Spray Piping**

## EARTHING OF HYDRANT POST/ HOSE BOX

A bolt shall be welded to these structures at the time of installation which can be used to connect them to the nearest riser or main 75x12mm GI flat through 50x6mm GI flat.



**Fig.- Earthing of hydrant box / hose box**

RELEASED FOR CONTRUCTION

POWER GRID CORPORATION  
OF INDIA LIMITED  
( A Government of India Enterprise )



PROJECT :- TECHNICAL SPECIFICATION-  
SWITCHYARD ERECTION

TITLE:- STANDARD EARTHING DETAILS

CKD BY	PRPD BY	Date	Drawing No.: C/ENG/STD/EARTHINGS/09 SHEET # 28
AKPashar	AKPashar	Dec-2013	